

**ORDINANCE NO. 11-972**

**AN ORDINANCE OF THE CITY COUNCIL OF THE CITY  
OF BLACK DIAMOND, KING COUNTY, WASHINGTON,  
ADOPTING THE BUDGET FOR CALENDAR YEAR 2012**

WHEREAS, the Preliminary Budget was submitted to the City Council by the Mayor on November 2, 2011; and

WHEREAS, the City Council held public hearings on November 22, 2011, and December 1, 2011 and workstudies on September 29, 2011, October 12, 2011, and October 27, 2011, and

WHEREAS, a copy of the Budget was on file with the City Clerk for examination by the public during the time it was being considered by the City Council; now, therefore,

THE CITY COUNCIL OF THE CITY OF BLACK DIAMOND, KING COUNTY, WASHINGTON, ORDAINS AS FOLLOWS:

Section 1. The annual budget of the City of Black Diamond for the 2012 calendar year, a copy of which is on file with the City Clerk, is hereby adopted by reference as the annual budget for the City of Black Diamond for calendar year 2012.

Section 2. The total estimated revenue from all sources and expenditures by fund as set forth in the 2012 budget document adopted by reference, are as follows:


<b>Fund #</b>	<b>Fund Name</b>	<b>Estimated Revenues</b>	<b>Estimated Expenses</b>
001	General Fund	5,455,415	5,455,415
101	Street Fund	443,353	443,353
104	REET I Fund - General Government	454,226	454,226
105	REET II Fund - Street Projects	570,625	570,625
310	Capital Fund - General Government	458,000	458,000
320	Capital Fund - Street Projects	288,782	288,782
401	Water Fund	1,490,874	1,490,874
402	Water Capital Facility Fund	422,800	422,800
404	Water Capital Fund	682,240	682,240
407	Wastewater Fund	864,957	864,957
408	Wastewater Capital Fund	852,245	852,245
410	Stormwater Fund	468,340	468,340
510	Equipment Reserves Fund	269,670	269,670
<b>Total</b>		<b>\$ 12,721,527</b>	<b>\$ 12,721,527</b>

Section 3. This Ordinance shall include the 2012 Salary Schedule as shown in the attachment as Exhibit A.

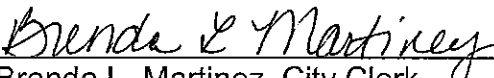
Section 4. This Ordinance shall be in full force and effect five days after its passage, approval, posting and publication in summary form as provided by law.

Introduced the 15th day of December, 2011.

Passed by a majority of the City Council at a meeting held on the 15th day of December, 2011.

  
\_\_\_\_\_  
Mayor Rebecca Olness

Attest:

  
\_\_\_\_\_  
Brenda L. Martinez, City Clerk

APPROVED AS TO FORM:

\_\_\_\_\_  
Chris Bacha, City Attorney

Published: 12/23/2011  
Posted: 12/16/2011  
Effective Date: 12/28/2011

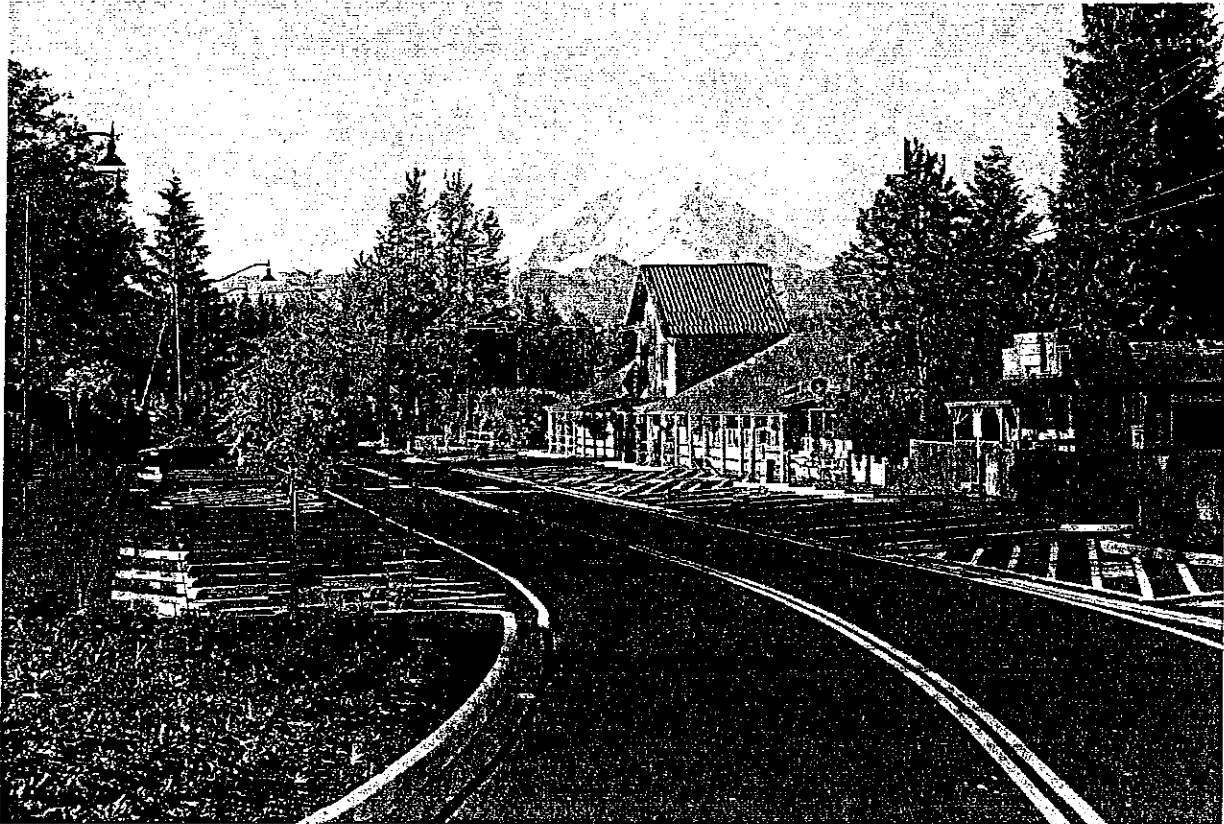
2012 Budget Adoption Ordinance

Exhibit A

2012 Salary Schedule	Level 1	Level 2	Level 3	Level 4	5 & On
City Administrator	9,161	9,459	9,913	10,271	10,634
Assistant City Administrator	7,875	8,269	8,663	9,056	9,450
Court Administrator	5,775	6,038	6,300	6,563	6,825
Interim Court Administrator	5,200				
Court Clerk (50% hourly)	18.17	19.69	21.20	22.72	24.23
Economic Development Ex Director	7,350	7,744	8,138	8,531	8,925
Stewardship Director	7,350	7,744	8,138	8,531	8,925
City Attorney	8,000	8,400	8,820	9,261	9,724
City Clerk	7,350	7,744	8,138	8,531	8,925
Deputy City Clerk	4,410	4,719	5,027	5,336	5,644
Finance Director	7,350	7,744	8,138	8,531	8,925
Deputy Finance Director	6,500	6,875	7,250	7,625	8,000
Utility Clerk	3,150	3,413	3,675	3,938	4,200
Senior Accountant 75% (hourly)	25.28	26.55	27.87	29.27	30.73
Accountant 1 Journey (hourly)	16.28	17.09	17.94	18.84	19.78
Administrative Assistant 2	3,150	3,413	3,675	3,938	4,200
Administrative Assistant 1	2,310	2,494	2,678	2,861	3,045
Information Services Manager	6,825	7,219	7,613	8,006	8,400
Police Chief	10,034	10,376	10,350	11,065	11,462
Police Commander	8,096	8,365	8,636	8,905	9,217
Police Sergeant	7,816	8,254			
Police Officer	4,748	5,321	5,896	6,469	7,013
Police Records Coordinator	4,410	4,719	5,027	5,336	5,644
Police Clerk 62.5% (hourly)	14.75	16.18	17.61	18.61	20.45
Facilities Equipment Coordinator	4,410	4,719	5,027	5,336	5,644
Human Resources Director	7,350	7,744	8,138	8,531	8,925
Community Development Ex Director	7,350	7,744	8,138	8,531	8,925
Permit Technician Supervisor	5,775	6,038	6,300	6,563	6,825
Permit Technician	4,410	4,719	5,027	5,336	5,644
Compliance Officer	4,410	4,719	5,027	5,336	5,644
Senior Planner	5,249	5,511	5,787	6,076	6,380
Planner	4,410	4,719	5,027	5,336	5,644
Associate Planner	4,394	4,614	4,845	5,087	5,341
Assistant Planner	4,099	4,304	4,519	4,745	4,982
Building Official	6,825	7,219	7,613	8,006	8,400
Parks Department Director	7,350	7,744	8,138	8,531	8,925
Public Works Director	7,350	7,744	8,138	8,531	8,925
Utilities Supervisor	6,825	7,219	7,613	8,006	8,400
Public Utilities Operator	4,620	4,700	4,792	4,884	4,976
Public Works Administrative Asst 3	4,166	4,375	4,594	4,823	5,065
Utility Worker	3,257	3,572	3,887	4,202	4,538
Utility Worker Seasonal (hourly)	12.98				

City of Black Diamond

# 2012 Final Budget



Railroad Avenue Project, completed in 2010

January 1, 2012 through December 31, 2012

Executive and Legislative City Officials	1
Mayor's Letter	2
<b>BUDGET SUMMARY</b>	
Operating and Capital Budget	4
Combined Operating Statement	5
Organization Chart	6
Employee Positions by Funding Source	7
<b>GENERAL FUND</b>	
Summary	8
Revenue Analysis	10
Expenditure Summary	18
<b>General Fund Departments</b>	
Legislative	21
Municipal Court	21
Executive	21
Administration	22
City Clerk	22
Finance	22
Information Services	23
Legal	23
Central Services	23
Capital Facilities	24
Animal Control	24
EMS Supplies	24
Police Department	24
Natural Resources	27
Community Development	27
Economic Development	28
Parks and Recreation	29
Cemetery	29
Fire Department	30
Funding Agreement, Studies, Deposits and Transfers	31
<b>SPECIAL REVENUE FUND</b>	
Street Fund 101	32
<b>UTILITY FUNDS</b>	
Water Department 401	34
Wastewater Department 407	36
Stormwater Department 410	38
<b>CAPITAL FUNDS</b>	39 – 44
Pay Schedule	45
Budget Calendar	46

Mayor Olness and Black Diamond City Council 2011



BILL SAAS LEIH MULVIHILL MAYOR REBECCA OLNESS BILL BOSTON KRISTINE HANSON CRAIG GOODWIN

November, 2011

Dear Honorable Black Diamond City Council Members and Citizens:

With the many challenges the City has faced over the past few years due to the economy, I am pleased to present you with a balanced budget for 2012. We have preserved essential core services without using any General Fund balance. We have approximately \$121,000 unspent funds remaining in the 2011 budget which will be added to the General Fund balance for a total of \$457,333. Any additional savings or unspent revenue will be put into the Reserve Fund barring any emergencies.

The final 2012 Budget has expected General Fund revenue of \$4,998,082, which is a decrease of \$43,879. This reduction is primarily due to the completion of some of the developer-funded Master Planned Development Environmental Impact Statement reimbursements but also includes reduced revenue due to decreases in utility taxes, state sales tax assistance to cities and parking fees. This revenue decrease was partially offset by a 1% increase in property tax revenue as well as a \$2,000 increase in sales tax revenue above expected 2011 collections. General Fund expenditures were first projected with all vacant positions filled and with union and non-union COLA and step increases, as well as the elimination of all furlough days. This resulted in an out-of-balance amount of \$361,578. Significant reductions were achieved by continuing to freeze the vacant City Administrator position as well as the two vacant police positions. The part-time court clerk position was cut from .75 to .50. There will be no non-union COLAs; and furlough days have been reduced from five to four days (July 5; August 31; December 24; December 31, 2012) for all employees except police and utility workers. After further review, all departments were able to reduce their budgets by an additional \$66,500 resulting in a General Fund expenditure of \$4,998,082.

Increases to General Fund expenditures include a 3% cost of living adjustment (COLA) for commissioned police officers per the agreement between the Police Guild and the City. Our contract with Fire District #44 calls for a 3.2% increase in 2012. The impact to the 2012 budget is an increase of \$26,235 for police and \$14,195 for fire. The Community Development budget has also increased by \$26,568 for code enforcement, plan check and building inspection professional services according to the ILA we have with the City of Covington. Inspection and Plan Check revenue is budgeted to cover this increase. The City's liability insurance increased by 12% (\$13,411) totaling \$111,766. In 2012, election costs will increase by approximately \$5,100.

Black Diamond operates three utilities: Water, Wastewater (sewer) and Stormwater, each with its own budget. At Council request, the Funding Agreement reimbursement to the three utility departments has been restored to 100%, resulting in an increase to each fund for staff overtime, training and professional services. Only capital expenditures adopted in the Capital Improvement Plan are included for these utilities. In 2011, the water meter replacement program and the first phase of the Department of Ecology Stormwater Grant were completed. There will be no utility rate increases in 2012.

In addition to the three utilities, the Public Works Department also manages City streets. The 2012 budget includes projects from the adopted 2012-2017 Capital Improvement Plan, including engineering for the Rock Creek Bridge; elevation of Abrahms Avenue; Ginder Creek land acquisition; trail projects; and replacing one police and two fire vehicles. The City was fortunate to receive several grants in 2011 which helped fund preliminary work on the Shoreline Master Plan; Roberts Drive sidewalk (phase 1) including the rain garden; 288th Street paving; Boat Launch improvements; Lawson/Newcastle intersection; and police station remodel.

We know that Governor Gregoire recently announced the State is facing a two-billion dollar budget deficit in 2012. As the State meets and resolves this deficit, we will keep you informed of any potential financial impacts to the City of Black Diamond.

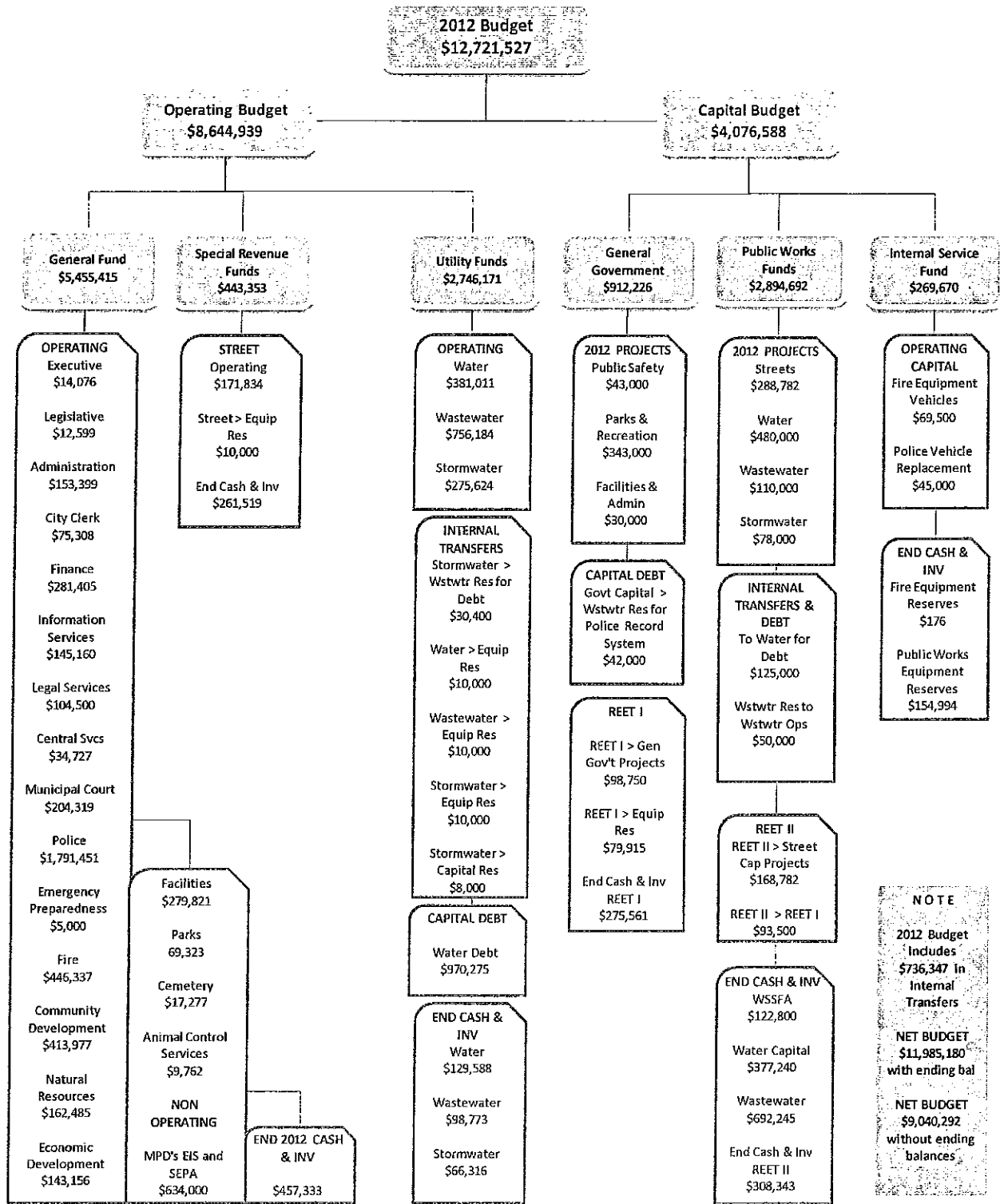
I want to take this opportunity to thank staff for their assistance in providing this balanced budget. It was not an easy task. Their continued hard work and the support of Council and citizens is greatly appreciated.



Rebecca Olness, Mayor  
City of Black Diamond

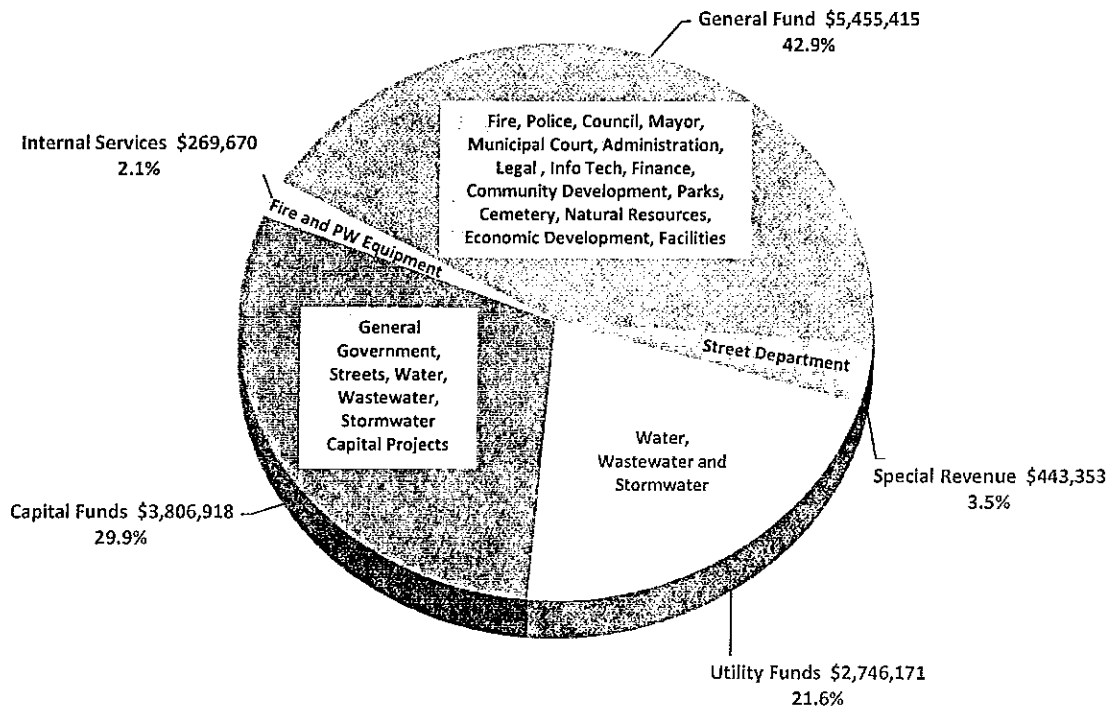


# 2012 Operating and Capital Preliminary Budget

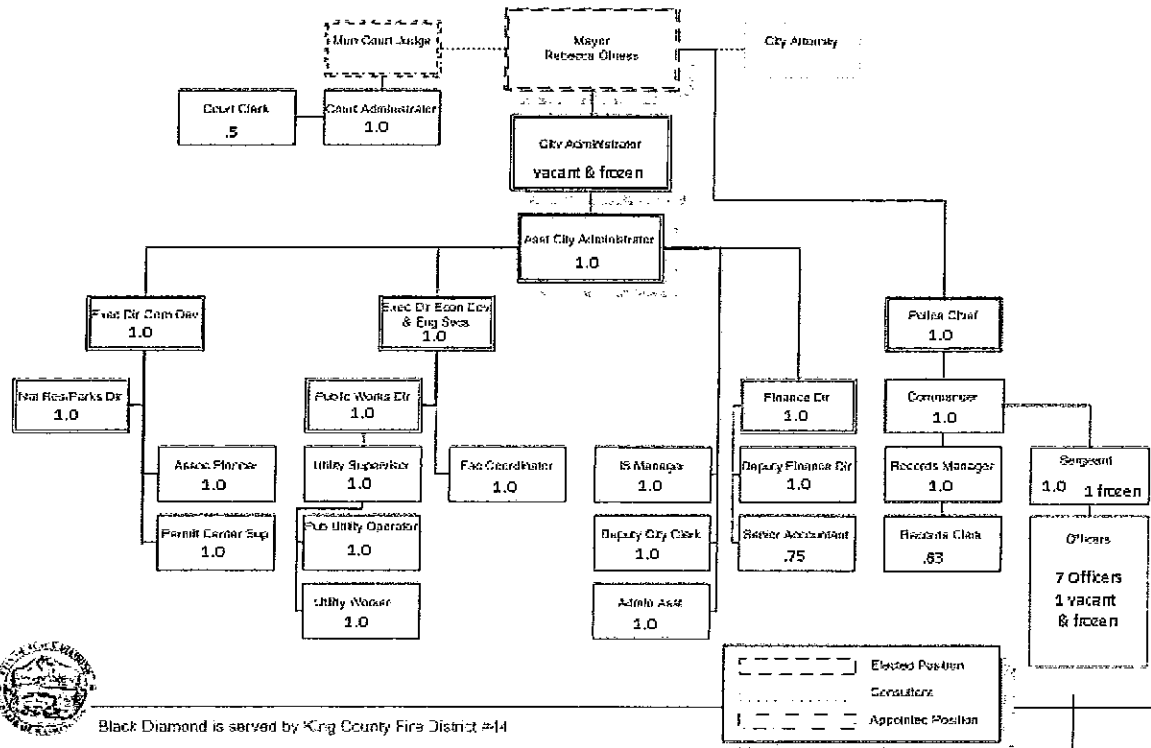


## All Funds 2012 Preliminary Budget Summary - Combined Operating Statement

	Beginning Fund Balance	2012 Revenue	Total Sources	2012 Expenditures	Ending Fund Balance	Total Uses
General Fund 001	457,333	4,998,082	5,455,415	4,998,082	457,333	5,455,415
Special Revenue Fund			-			-
101 Street Fund	310,627	132,726	443,353	181,834	261,519	443,353
Utility Funds						
401 Water Fund	151,202	1,339,672	1,490,874	1,361,286	129,588	1,490,874
407 Wastewater Fund	105,500	759,457	864,957	766,184	98,773	864,957
410 Stormwater Fund	62,934	327,406	390,340	324,024	66,316	390,340
Capital Funds						
310 General Government CIP fund	-	458,000	458,000	458,000	-	458,000
320 Street CIP Fund	-	288,782	288,782	288,782	-	288,782
402 Water Supply and Facility Fund	122,800	300,000	422,800	300,000	122,800	422,800
404 Water Capital Fund	486,240	196,000	682,240	305,000	377,240	682,240
408 Wastewater Capital Fund	723,545	128,700	852,245	160,000	692,245	852,245
410 Stormwater Capital Fund		78,000	78,000	78,000		78,000
104 REET Fund - General Govt	321,026	133,200	454,226	178,665	275,561	454,226
105 REET Fund - Street Projects	530,125	40,500	570,625	262,282	308,343	570,625
Internal Service Fund 510						
1 Fire Equipment Reserve Fund	34,661	35,015	69,676	69,500	176	69,676
2 Street Equipment Reserve Fund	114,694	40,300	154,994		154,994	154,994
3 Police Equipment Reserve Fund		45,000	45,000	45,000		45,000
<b>Grand Total All Funds</b>	<b>3,420,687</b>	<b>9,300,840</b>	<b>12,721,527</b>	<b>9,776,639</b>	<b>2,944,888</b>	<b>12,721,527</b>



City of Black Diamond Departmental Organization (Personnel)



Black Diamond is served by King County Fire District #14

  Elected Position  
  Consultant  
  Appointee Position

2012 Changes:  
 Employee change from 2011 Amended Budget: -.25 FTE Court Clerk (from 75% to 50%)  
 One Sergeant promoted to Commander in the Police Department

# Black Diamond Fiscal Budget | 2012

2012 Employee Allocations by Funding Source							
Positions	Full Time Equivalent (FTE)	Funding Agreement	General Fund	Street Fund	Water Fund	Waste water Fund	Storm water Fund
<b>Municipal Court</b>							
Court Administrator	1.00		1.00				
Court Clerk	0.50		0.50				
<b>Total Court</b>	<b>1.50</b>		<b>1.50</b>				
<b>Administration</b>							
City Administrator, (Frozen & Unfunded)	1.00						
City Clerk/Asst City Administrator	1.00	1.00					
Admin Assistant I	1.00		0.10		0.3	0.3	0.3
<b>Total Administration</b>	<b>3.00</b>	<b>1.00</b>	<b>0.1</b>		<b>0.3</b>	<b>0.3</b>	<b>0.3</b>
<b>City Clerk</b>							
Deputy City Clerk	1.00		0.60	0.04	0.12	0.12	0.12
<b>Total City Clerk</b>	<b>1.00</b>		<b>0.6</b>	<b>0.0</b>	<b>0.1</b>	<b>0.1</b>	<b>0.1</b>
<b>Finance Department</b>							
Finance Director	1.00	1.00					
Deputy Finance Director	1.00	1.00					
Senior Accountant	0.75		0.45	0.03	0.09	0.09	0.09
<b>Total Finance</b>	<b>2.75</b>	<b>2.00</b>	<b>0.45</b>	<b>0.03</b>	<b>0.09</b>	<b>0.09</b>	<b>0.09</b>
<b>Information Services</b>							
Information Services Manager	1.00	1.00					
<b>Total Information Services</b>	<b>1.00</b>	<b>1.00</b>					
<b>Police Department</b>							
Police Chief	1.00		1.00				
Police Commander	1.00		1.00				
Sergeant (1 Frozen & Unfunded)	2.00		1.00				
Police Officer (1 Frozen & Unfunded)	8.00		7.00				
Police Records Coordinator	1.00		1.00				
Police Clerk	0.63		0.63				
<b>Total Police Department</b>	<b>13.63</b>		<b>11.63</b>				
<b>Community Development</b>							
Community Development Director	1.00	1.00					
Associate Planner	1.00	1.00					
Permit Technician Supervisor	1.00	1.00					
<b>Total Community Development</b>	<b>3.00</b>	<b>3.00</b>					
<b>Economic Development</b>							
Economic Development Director	1.00	1.00					
<b>Total Economic Development</b>	<b>1.00</b>	<b>1.00</b>					
<b>Facilities Department</b>							
Facilities Equipment Coordinator	1.00	1.00					
<b>Total Facilities</b>	<b>1.00</b>	<b>1.00</b>					
<b>Stewardship</b>							
Stewardship Director	1.00	1.00					
<b>Total Stewardship</b>	<b>1.00</b>	<b>1.00</b>					
<b>Public Works</b>							
Public Works Director - Funding	1.00		0.10	0.15	0.25	0.25	0.25
Admin Assistant III- Funding	1.00			0.25	0.25	0.25	0.25
<b>Total Funding</b>		<b>2.00</b>	<b>-0.10</b>	<b>-0.4</b>	<b>-0.5</b>	<b>-0.5</b>	<b>-0.5</b>
Utilities Supervisor	1.00		0.10	0.15	0.25	0.25	0.25
Utility Worker	1.00		0.10	0.15	0.25	0.25	0.25
Utilities Operator	1.00		0.10	0.15	0.25	0.25	0.25
Seasonal Help for Parks	0.42		0.04	0.06	0.10	0.10	0.10
<b>Total Public Works</b>	<b>5.42</b>	<b>2.00</b>	<b>0.34</b>	<b>0.51</b>	<b>0.85</b>	<b>0.85</b>	<b>0.85</b>
<b>Grand Total Budget Positions (FTE's)</b>	<b>34.30</b>	<b>12.00</b>	<b>14.62</b>	<b>0.58</b>	<b>1.36</b>	<b>1.36</b>	<b>1.36</b>
<b>Less Frozen and Unfunded</b>	<b>-3.0</b>						
<b>Actual Funded Positions (FTE's)</b>	<b>31.30</b>						

**GENERAL FUND SUMMARY**

<b>2012 General Fund Final Budget - Revenue</b>					
	<b>2011 Amended Budget</b>	<b>2012 Final Budget</b>	<b>2011 &amp; 2012 Budget Difference</b>	<b>Budget Change %</b>	
1	<b>REVENUE</b>				
2	Property Taxes	1,369,803	1,383,500	13,697	1.0%
3	Sales Tax	270,000	292,000	22,000	8.1%
4	Utility Taxes	478,336	464,850	(13,486)	-2.8%
5	Gambling/B&O Taxes	4,500	3,500	(1,000)	-22.2%
6	<b>Subtotal Taxes</b>	<b>2,122,639</b>	<b>2,143,850</b>	<b>21,211</b>	<b>1.0%</b>
7	Business Licenses & Permits	25,600	24,320	(1,280)	-5.0%
8	Cable Franchise Fees	55,500	57,200	1,700	3.1%
9	<b>Subtotal Licenses &amp; Fees</b>	<b>81,100</b>	<b>81,520</b>	<b>420</b>	<b>0.5%</b>
10	<b>Land Use and Permitting Fees</b>	<b>66,000</b>	<b>72,050</b>	<b>6,050</b>	<b>9.2%</b>
11	Liquor Tax & Profits	51,806	51,600	(206)	-0.4%
12	KC Ems Levy	53,511	53,511	0	0.0%
13	State Assistance	51,865	39,000	(12,865)	-24.8%
14	Recycle & Miscellaneous Grants	19,002	19,000	(2)	0.0%
15	<b>Subtotal Intergovernmental Revenue</b>	<b>176,184</b>	<b>163,111</b>	<b>(13,073)</b>	<b>-6.6%</b>
16	Police Traffic School	20,000	20,000	0	0.0%
17	Police Grants & Other Police Revenue	57,673	57,420	(253)	-0.4%
18	Police Criminal Justice Revenue	91,250	90,000	(1,250)	-1.4%
19	Lake Sawyer Parking Fees	16,000	12,000	(4,000)	-25.0%
20	Passports, Cemetery & Miscellaneous Charges	28,046	38,550	10,504	37.5%
21	Internal Service Non-Funding Allocation	107,533	107,533	0	0.0%
22	<b>Subtotal Charges for Service</b>	<b>320,502</b>	<b>325,503</b>	<b>5,001</b>	<b>1.6%</b>
23	<b>Court Fines and Fees</b>	<b>135,000</b>	<b>135,900</b>	<b>900</b>	<b>0.7%</b>
24	<b>Miscellaneous Revenue and Transfers in</b>	<b>6,700</b>	<b>3,030</b>	<b>(3,670)</b>	<b>-54.8%</b>
25	<b>Total Operating Revenue (non-partner)</b>	<b>2,908,125</b>	<b>2,924,964</b>	<b>16,839</b>	<b>0.6%</b>
26	Funding Agreement - Staffing & Operating	1,438,661	1,439,118	457	0.0%
27	<b>Total Operating With YB Operating REV</b>	<b>4,346,786</b>	<b>4,364,082</b>	<b>17,296</b>	<b>0.4%</b>
28	FA Legal, One-time-only, Master Plan Dev, EIS & Ar	695,175	634,000	(61,175)	-8.8%
29	<b>Total Operating and Other GF Revenue</b>	<b>5,041,961</b>	<b>4,998,082</b>	<b>(43,879)</b>	<b>-0.9%</b>
30	Beginning Fund Balance-Deposit	163,790	255,590	91,800	56.0%
31	Beginning Fund Balance	178,560	201,743	23,183	13.0%
32	<b>Total Beginning Fund Balance</b>	<b>342,350</b>	<b>457,333</b>	<b>114,983</b>	<b>33.6%</b>
33	<b>Total General Fund Sources</b>	<b>5,384,311</b>	<b>5,455,415</b>	<b>71,104</b>	<b>1.3%</b>

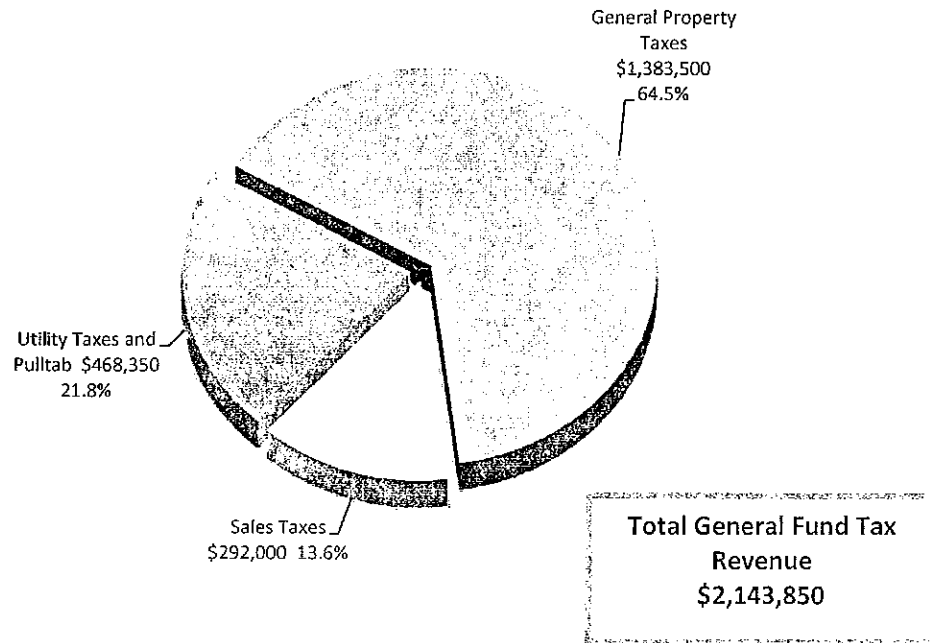
<b>2012 General Fund Final Budget - Expenditures</b>				
	<b>2011 Amended Budget</b>	<b>2012 Final Budget</b>	<b>2011 &amp; 2012 Budget Difference</b>	<b>Budget Change %</b>
<b>1 EXPENDITURES by Department</b>				
2 Executive-Mayor	14,330	14,076	(254)	-1.8%
3 Legislative-Council	12,603	12,599	(4)	0.0%
4 Administration	150,954	153,399	2,445	1.6%
5 City Clerk	68,596	75,308	6,712	9.8%
6 Finance	280,962	281,405	443	0.2%
7 Information Services	142,332	145,160	2,828	2.0%
8 Facilities	98,718	99,821	1,103	1.1%
9 Facilities-Operating Costs (FA Reimb)	180,000	180,000	0	0.0%
10 Legal	104,000	104,500	500	0.5%
11 Municipal Court	229,887	204,319	(25,568)	-11.1%
12 Police Department	1,765,216	1,791,451	26,235	1.5%
13 Emergency Management	5,000	5,000	0	0.0%
14 Fire Department	432,142	446,337	14,195	3.3%
15 Animal Control	16,025	9,762	(6,263)	-39.1%
16 Community Development	387,469	413,977	26,508	6.8%
17 Natural Resources	159,144	162,485	3,341	2.1%
18 Economic Development	142,316	143,156	840	0.6%
19 Parks	72,428	69,323	(3,105)	-4.3%
20 Cemetery	17,445	17,277	(168)	-1.0%
21 Central Services	38,974	34,727	(4,247)	-10.9%
<b>22 Total Operating Expenses</b>	<b>4,318,541</b>	<b>4,364,082</b>	<b>45,541</b>	<b>1.1%</b>
23 Other Exp - MPD & Developer Agreement	730,175	634,000	(96,175)	-13.2%
<b>24 Total Expenditures</b>	<b>5,048,716</b>	<b>4,998,082</b>	<b>(50,634)</b>	<b>-1.0%</b>
25 Ending Fund Balance	171,805	201,743	29,938	17.4%
26 Ending Fund Balance - Partners	163,790	255,590	91,800	56.0%
27 Total Ending Fund Balance	335,595	457,333	121,738	36.3%
<b>28 Total General Fund Uses</b>	<b>5,384,311</b>	<b>5,455,415</b>	<b>71,104</b>	<b>1.3%</b>

## General Fund Revenue

Total General Fund revenue sources are estimated at \$4,998,082 for 2012. Of this, \$2,924,964 is the General Operating Revenue Budget. This is an overall increase of .6%, or \$16,839 from 2011. Most operating revenue in the General Fund comes from taxes.

Tax Revenue - General Fund		2010 Actual	2011 Amended Budget	2011 Actual thru August	2012 Final Budget	11 to 12 Budget Change	% Budget Change
1	General Property Taxes	998,553	1,369,803	716,696	1,383,500	13,697	1.0%
2	Sales Taxes	265,177	270,000	193,997	292,000	22,000	8.1%
3	B & O Tax	2,500					
4	Solid Waste Tax	29,519	30,000	19,081	28,500	(1,500)	-5.0%
5	Cable TV Utility Tax	11,188	11,000	7,650	11,200	200	1.8%
6	Telephone Tax	144,313	138,000	87,860	126,000	(12,000)	-8.7%
7	Gas Utility Tax	1,175	2,100	493	750	(1,350)	-64.3%
8	Electrical Tax	203,693	210,000	167,259	215,000	5,000	2.4%
9	Water Utility Tax	24,333	28,236	17,798	27,000	(1,236)	-4.4%
10	Stormwater Utility Tax	14,239	16,500	10,930	16,500		0%
11	Wastewater Utility Tax	35,941	42,500	24,753	39,900	(2,600)	-6.1%
12	Pull Tabs and Punch Board Tax	4,522	4,500	2,649	3,500	(1,000)	-22.2%
13	<b>Total General Fund Taxes</b>	<b>1,735,153</b>	<b>2,122,639</b>	<b>1,249,166</b>	<b>2,143,850</b>	<b>21,211</b>	<b>1.0%</b>

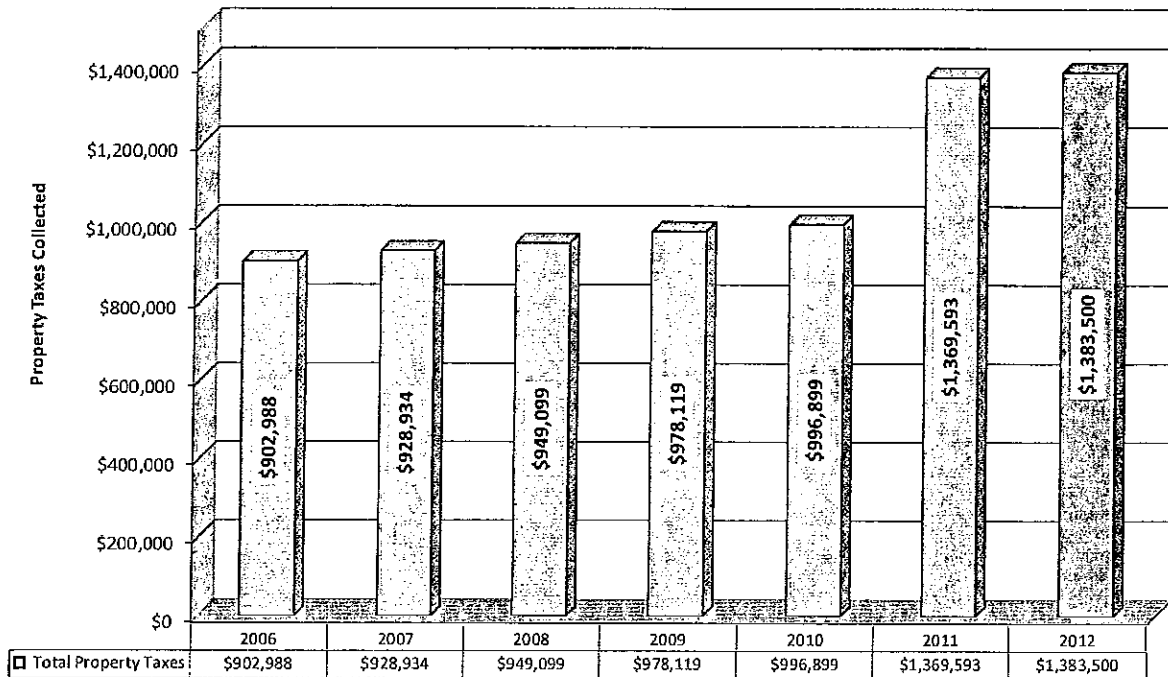
Estimated tax revenue in the General Fund is \$21,211 and 1% higher than the 2011 Budget. Property taxes are increasing by the allowed 1% or \$13,697, and sales taxes have been adjusted to current trend. Utility taxes are 6% on all public and private utilities such as electric, natural gas, water, wastewater, stormwater, telephone, and 1% on cable services. An additional 5% is collected as cable franchise fees (see section after taxes). Most utility taxes have been reduced in 2012 with the exception of electric and cable TV taxes.



# Black Diamond Fiscal Budget | 2012

Property Taxes make up 64.5% of General Fund tax revenue. The City's levy rate in 2012 is \$2.57 per each \$1,000 of the King County appraised value on property in Black Diamond. All revenue from property taxes goes to support public safety by providing police, fire protection and emergency services. King County has provided the City with preliminary numbers for 2012, to be updated shortly after the first of the year.

### Property Tax Collection History and 2012 Budget



<b>Regular Levy</b>	895,717	924,132	935,648	960,282	992,732	1,360,124	1,383,500
<b>New Construction</b>	7,271	4,802	13,451	17,837	4,167	3,147	
<b>Annexation</b>						6,322	
<b>Total Property Taxes</b>	<b>\$902,988</b>	<b>\$928,934</b>	<b>\$949,099</b>	<b>\$978,119</b>	<b>\$996,899</b>	<b>\$1,369,593</b>	<b>\$1,383,500*</b>
<b>\$ Increase from prior year</b>	\$902,988	\$25,946	\$20,165	\$29,020	\$18,780	\$372,694	\$13,907*
<b>Levy Rate</b>	2.0320	2.0028	1.8349	1.6503	1.5201	2.5700	2.5700*
<b>Allowable Levy</b>					3.10	3.10	3.10
<b>Assessed Valuation</b>	<b>\$449,793,888</b>	<b>\$505,566,937</b>	<b>\$575,076,069</b>	<b>\$647,422,007</b>	<b>\$565,429,606</b>	<b>\$532,997,258</b>	<b>\$538,310,203*</b>

NOTE: 2011 increase in taxes is due to a voted levy for Public Safety in 2010

\* Preliminary KC #'s



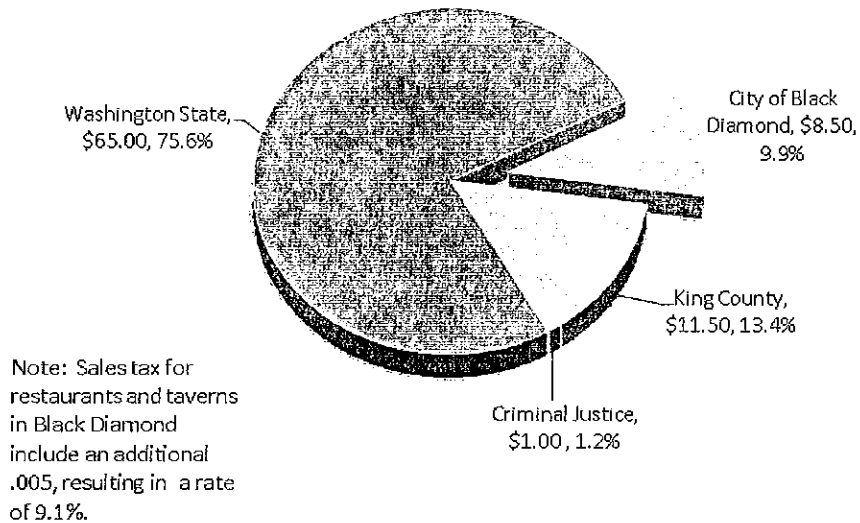
**Sales taxes** for the 2012 Budget are forecast to be \$292,000 or 13.6% of all General Fund taxes. For every \$1,000 spent in Black Diamond 8.6%, or \$86 is collected by the State and is shared by a few jurisdictions (see chart below). Sales tax is currently 8.6% in Black Diamond (an additional .5% is collected from restaurants and taverns). Of the \$86 in taxes, our city receives back about 10% of that total, or \$8.50.

Black Diamond's sales tax revenues are dependent on retail sales of products and services sold in the City, as well as tax on new construction. In 2009 sales tax streamlining went into effect in Washington. This law shifts sales tax collections to the *delivered destination* rather than the place of purchase. This has improved sales tax collections and helped offset the impacts of recessi

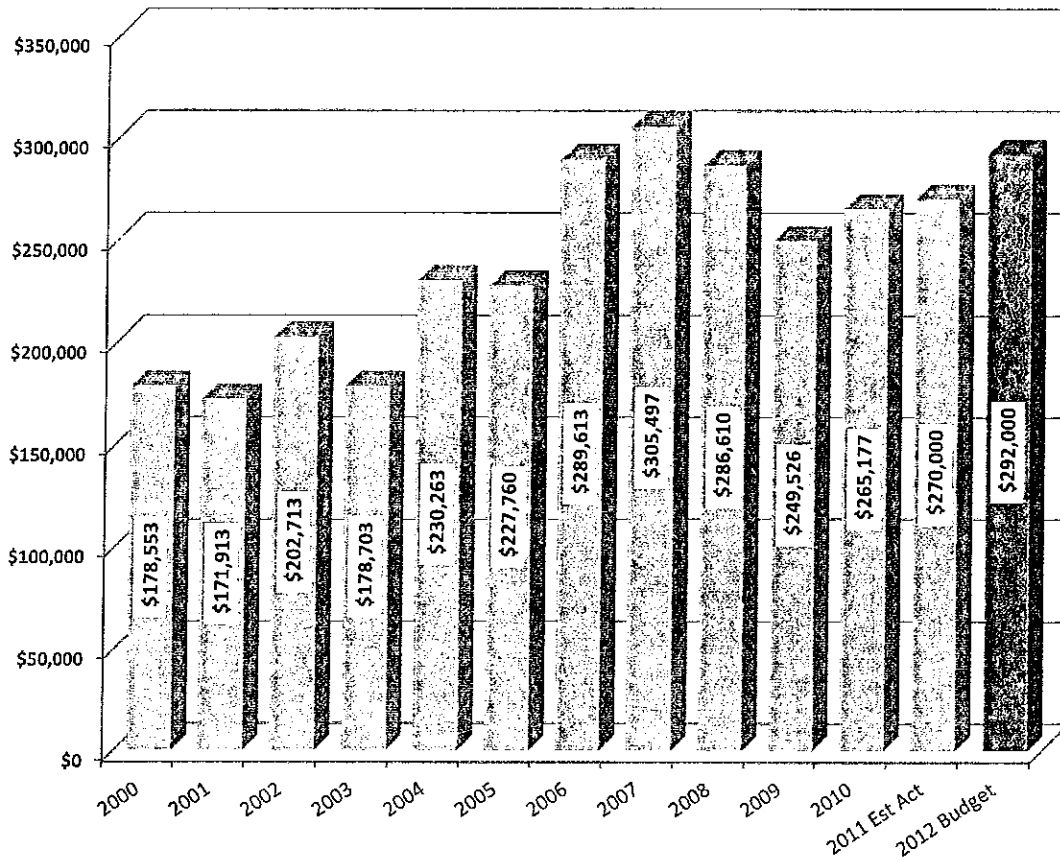
on.

## 2012 Sales Taxes Taxed amount is 8.6% of Retail Sales

Based on a \$1,000 sale, retail sales tax is \$86.00 and is distributed in the following way:



Sales Tax Collection History and 2012 Budget



Non-tax General Fund Revenue

<b>Business License and Cable Franchise Fee Revenue - General Fund</b>		2010 Actual	2011 Amended Budget	2011 Actual thru August	2012 Final Budget	11 to 12 Budget Change	% Budget Change
1	Business Licenses	25,845	25,600	23,140	24,320	(1,280)	-5.0%
2	Cable Franchise Fees	54,976	55,500	42,555	57,200	1,700	3.1%
3	<b>Total Gen Fund Bus. License &amp; Cable Fee Rev.</b>	<b>80,821</b>	<b>81,100</b>	<b>65,695</b>	<b>81,520</b>	<b>420</b>	<b>0.5%</b>

<b>Intergovernmental Revenue (non-police) - General Fund</b>		2010 Actual	2011 Amended Budget	2011 Actual thru August	2012 Final Budget	11 to 12 Budget Change	% Budget Change
4	Sales Tax Assistance from State	73,172	51,865	18,282	39,000	(12,865)	-24.8%
5	Recycle Grants, King County and State	19,037	19,002	19,002	19,000	(2)	0.0%
6	Liquor Excise Tax	20,720	20,866	15,270	19,800	(1,066)	-5.1%
7	Liquor Board Profits	33,448	30,940	16,254	31,800	860	2.8%
8	KC EMS VLS Contract	52,838	53,511	53,115	53,512	1	0%
9	Animal Control (one-time refund)			4,656			
10	<b>Total Intergovernmental Revenue (non-police)</b>	<b>199,214</b>	<b>176,184</b>	<b>126,579</b>	<b>163,112</b>	<b>(13,073)</b>	<b>-7.4%</b>

# Black Diamond Fiscal Budget | 2012

<b>Charges for Services (non-police) - General Fund</b>		<b>2010 Actual</b>	<b>2011 Budget</b>	<b>2011 Actual thru August</b>	<b>2012 Final Budget</b>	<b>11 to 12 Budget Change</b>	<b>% Budget Change</b>
1	Misc Charges for Services	773	350	2,063	1,500	1,150	328.6%
2	Passport Fee	8,025	5,000	3,200	5,000		0%
3	Other Fees for Service	24,540	33,764	32,498	26,000	(7,764)	-23.0%
4	Lake Sawyer Parking Fee	14,499	16,000	9,587	12,000	(4,000)	-25.0%
5	Cemetery Revenue	7,475	4,650	2,650	6,050	1,400	30.1%
6	Central Service & GF Allocations	94,619	107,533	71,664	107,463	(70)	-0.1%
7	<b>Total Charges for Service (non-police)</b>	<b>149,931</b>	<b>167,297</b>	<b>121,662</b>	<b>158,013</b>	<b>(9,284)</b>	<b>-5.5%</b>

<b>Municipal Court Revenue - General Fund</b>		<b>2010 Actual</b>	<b>2011 Budget</b>	<b>2011 Actual thru August</b>	<b>2012 Final Budget</b>	<b>11 to 12 Budget Change</b>	<b>% Budget Change</b>
8	Court Mand. Insurance Costs	3,787	4,500	3,150	4,850	350	7.8%
9	Court Traffic Infractions	62,958	65,000	46,862	72,000	7,000	10.8%
10	Court Other Non Traffic Infr.	759	800	354	800		0%
11	Court Parking Fines	2,085	2,500	1,132	2,000	(500)	-20.0%
12	Court DUI Fines	4,421	3,000	1,198	2,200	(800)	-26.7%
13	Court Criminal Traffic Misd.	11,076	12,000	3,804	7,800	(4,200)	-35.0%
14	Nontraffic Fees and Infractions	5,302	6,000	1,512	2,800	(3,200)	-53.3%
15	Administration/Correction Fees	38,228	30,600	23,082	34,000	3,400	11.1%
16	Court Interest and Miscellaneous Fees	8,638	10,600	6,564	9,450	(1,150)	-10.8%
17	<b>Total Municipal Court Revenue</b>	<b>137,255</b>	<b>135,000</b>	<b>87,658</b>	<b>135,900</b>	<b>900</b>	<b>0.7%</b>

<b>Miscellaneous Revenue &amp; Transfers Revenue</b>		<b>2010 Actual</b>	<b>2011 Budget</b>	<b>2011 Actual thru August</b>	<b>2012 Final Budget</b>	<b>11 to 12 Budget Change</b>	<b>% Budget Change</b>
18	LGIP Investment and Misc. Interest	1,514	1,700	805	1,100	(600)	-35.3%
19	Surplus GF Equipment	20	1,500	1,398	1,500		0%
20	Misc Revenue	2,607	3,500	855	500	(3,000)	-85.7%
21	<b>Total Miscellaneous Revenue</b>	<b>4,141</b>	<b>6,700</b>	<b>3,058</b>	<b>3,100</b>	<b>(3,600)</b>	<b>-53.7%</b>
22	Transfer in from Criminal Justice Fund	102,000					
23	<b>Total Transfers</b>	<b>102,000</b>					

## Police Revenue

<b>Police Revenue - General Fund</b>		2010 Actual	2011 Budget	2011 Actual thru August	2012 Final Budget	11 to 12 Budget Change	% Budget Change
1	<b>Police Intergovernmental Revenue</b>						
2	Marine Grant-USCG 97-012/Wa Parks	29,597	25,353		15,000	(10,353)	-40.8%
3	WTSC- X52 Speeding	2,222	1,000		1,000		0%
4	WASPC Traffic Safety Equip-Radar	2,197	1,800	1,000	1,000	(800)	-44.4%
5	WTSC- X52DUI/DHGN	1,737	3,300	619	3,500	200	6.1%
6	WTSC- Nighttime Seat Belt Enforce	729		523			
7	Police CETED ST EQ Grant	9,218	3,000		3,000		0%
8	Police DUI Emphasis Grant			298			
9	Vessel Registration Boat Safety	17,051	10,520	10,520	10,520		0%
10	Vessel Reg. Boat Safety Carryover				10,500	10,500	100%
11	<b>Total Police Intergovernmental Revenue</b>	<b>62,751</b>	<b>44,973</b>	<b>12,960</b>	<b>44,520</b>	<b>(453)</b>	<b>-1.0%</b>
12	<b>Police Charges for Service</b>						
13	Police Traffic School Fee	15,830	20,000	9,200	20,000		0%
14	Police Overtime Reimb	650		638	1,300	1,300	100%
15	Police Traffic Reimb	375		525	500	500	100%
16	Police Records and Services	140		170	300	300	100%
17	Police-DUI Cost Recovery	7,167	8,500	3,806	6,500	(2,000)	-23.5%
18	DRE-Drug Recognition Expert Services	552		375	800	800	100%
19	Electronic Home Monitoring	1,460	2,500	100	1,000	(1,500)	-60.0%
20	Work Crew Screening and per Day State Fee		500	190	700	200	40.0%
21	<b>Total Police Charges for Service</b>	<b>26,174</b>	<b>31,500</b>	<b>15,003</b>	<b>31,100</b>	<b>(400)</b>	<b>-1.3%</b>
22	<b>Police Confiscated, Donation, DARE, etc.</b>						
23	Donation for Marine	100		500	500	500	100%
24	Gun Permits and Fingerprinting	1,309	1,200	1,020	1,300	100	8.3%
25	DARE Donations from Private Sources		950	500	1,000	50	5.3%
26	K-9 Donation		250	1,815	2,000	1,750	700%
27	Dare Grant-Walmart		150			(150)	-100%
28	Unclaimed/ Found Property			250			
29	Confiscated and Forfeited Property		1,000			(1,000)	-100%
30	<b>Total Police Confiscated, Donated Revenue</b>	<b>1,409</b>	<b>3,550</b>	<b>4,085</b>	<b>4,800</b>	<b>1,250</b>	<b>35.2%</b>
31	<b>Police Criminal Justice Revenue</b>						
32	Local Criminal Justice Funds		83,000	56,007	82,000	(1,000)	-1.2%
33	Criminal Justice - Violent Crimes/Population		1,000	750	1,000		0%
34	Criminal Justice Dcd 1		800	678	800		0%
35	Criminal Justice - Special Programs		3,500	2,622	3,200	(300)	-8.6%
36	DUI and Other Criminal Justice Assistance		600			(600)	-100.0%
37	<b>Total Criminal Justice Revenue</b>		<b>88,900</b>	<b>60,057</b>	<b>87,000</b>	<b>(1,900)</b>	<b>-2.1%</b>
38	<b>Total Police General Fund Revenue</b>	<b>90,334</b>	<b>168,923</b>	<b>92,105</b>	<b>167,420</b>	<b>(1,503)</b>	<b>-0.9%</b>

# Black Diamond Fiscal Budget | 2012

## Community Development Revenue

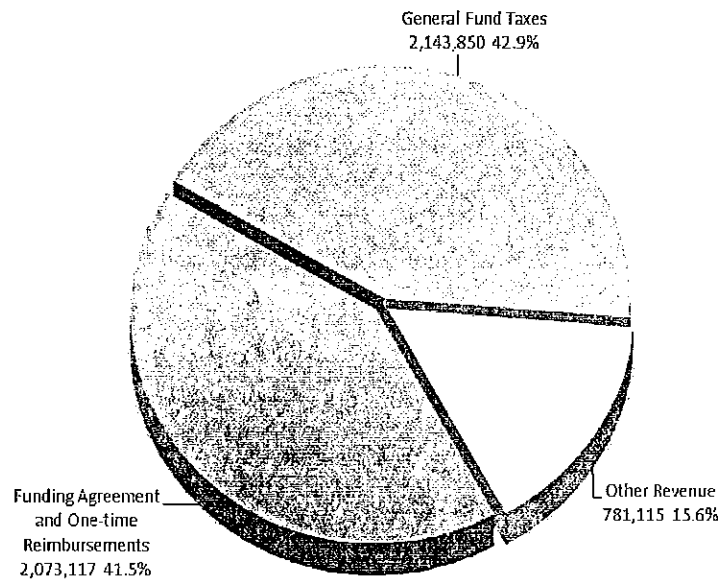
<b>Community Development Revenue - General Fund</b>		2010	2011	2011	2012	Final	11 to 12	% Budget
		Actual	Budget	Actual thru August	Budget	Budget	Budget Change	Change
1	<b>Permitting Revenue</b>							
2	Building Permit Fees	20,031	25,000	22,251	25,000			0%
3	Grading & Clearing Permits		500	743	1,000	500		100%
4	Mechanic Permits	1,456	1,500	2,152	2,600	1,100		73.3%
5	Plumbing Permits	814	1,000	1,198	1,300	300		30.0%
6	Demolition Permits	120	400	360	500	100		25.0%
7	Sprinkle/Alarm, Firework Permit	558	300	300	200	(100)		-33.3%
8	Sign Permits	640	800	301	600	(200)		-25.0%
9	<b>Total Permitting Revenue</b>	<b>23,618</b>	<b>29,500</b>	<b>27,305</b>	<b>31,200</b>	<b>1,700</b>		<b>5.8%</b>
10	<b>Land Use Fees</b>							
11	TDR Application/Credit		500		750	250		50.0%
12	Various Land Use Fees	3,793	2,000	98,050	7,500	5,500		275.0%
13	Lot Line Adjustments/Plats		2,000		600	(1,400)		-70.0%
14	Various Shoreline Fees	1,350	2,750	200	500	(2,250)		-81.8%
15	SEPA Fees and Appeals	1,991		2,000	3,000	3,000		100%
16	<b>Total Land Use Fees</b>	<b>7,135</b>	<b>7,250</b>	<b>100,250</b>	<b>12,350</b>	<b>5,100</b>		<b>70.3%</b>
17	<b>Plan Check Fees</b>							
18	Plan Check Review Fees	14,509	20,000	12,640	20,000			0%
19	Fire Plan Check Fees	767	750	421	500	(250)		-33.3%
20	<b>Total Plan Check Fees</b>	<b>15,276</b>	<b>20,750</b>	<b>13,061</b>	<b>20,500</b>	<b>(250)</b>		<b>-1.2%</b>
21	<b>Other Community Dev. Revenue</b>							
22	King County Rec. fees & code fines, etc.	45		252	300	300		100%
23	Copying Services	534	500	457	700	200		40.0%
24	Community Development Deposits	1,812	3,000	14,266	2,000	(1,000)		-33.3%
25	Hearing Examiner Fees		5,000		5,000			0%
26	<b>Total Other Community Development Revenue</b>	<b>2,391</b>	<b>8,500</b>	<b>14,975</b>	<b>8,000</b>	<b>(500)</b>		<b>-5.9%</b>
27	<b>Total Community Development Revenue</b>	<b>48,420</b>	<b>66,000</b>	<b>155,591</b>	<b>72,050</b>	<b>6,050</b>		<b>9.2%</b>

<b>Funding Agreement Revenue - General Fund</b>		2010	2011	2011	2012	Final	11 to 12	% Budget
		Actual	Budget	Actual thru August	Budget	Budget	Budget Change	Change
28	Partner-Funding Agreement	1,267,451	1,438,661	816,055	1,439,117	456		0.03%
29	Funding Agreement Staff Reimbursement	82,517		104,207				
30	<b>Total Funding Agreement Revenue</b>	<b>1,349,968</b>	<b>1,438,661</b>	<b>920,262</b>	<b>1,439,117</b>	<b>456</b>		<b>0.03%</b>
31	<b>Total Operating General Fund Revenue</b>	<b>3,897,237</b>	<b>4,362,504</b>	<b>2,821,775</b>	<b>4,364,082</b>	<b>1,578</b>		<b>0.04%</b>

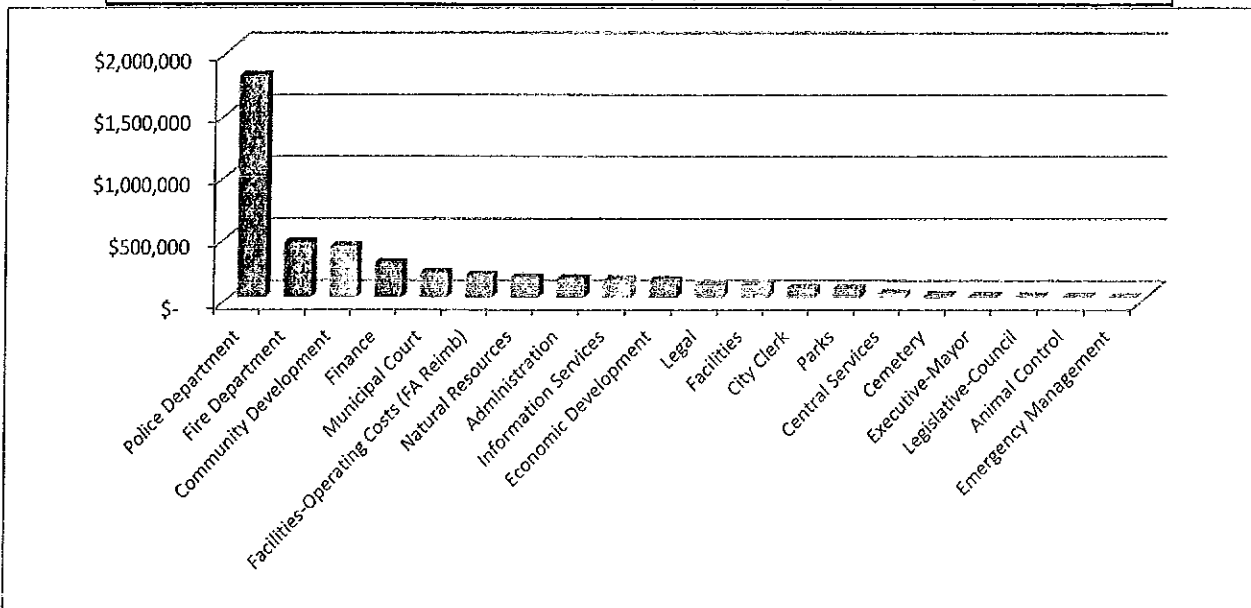
# Black Diamond Final Budget | 2012

<b>Other General Fund Revenue</b>		<b>2010</b>	<b>2011</b>	<b>2011</b>	<b>2012</b>	<b>11 to 12</b>	<b>% Budget</b>
		<b>Actual</b>	<b>Budget</b>	<b>Actual thru August</b>	<b>Final Budget</b>	<b>Budget Change</b>	<b>Change</b>
1	MPD-Lawson Reimbursement	188,841	195,251	112,167	300,000	104,749	53.6%
2	MPD-Villages Reimbursement	202,083	230,251	114,291	300,000	69,749	30.3%
3	MPD/Dev Agree-Misc Reimbursements		269,673	180,377	34,000	(235,673)	-87.4%
4	Annexation Reimbursements	665		5,734			
5	Annexations Deposit Refund			(20,000)			
6	MPD-Lawson and Villages Deposit	25,000					
7	<b>Total MPD Revenue</b>	<b>416,589</b>	<b>695,175</b>	<b>392,569</b>	<b>634,000</b>	<b>(61,175)</b>	<b>-8.8%</b>
8	Reduction of EIS/SEPA Deposit	(80,000)					
9	EIS/SEPA Reimbursement	292,815					
10	EIS/Morgan Kame Reimbursement	4,179					
11	PSE Franchise Agree-Reimbursement	9,311					
12	<b>Total EIS/SEPA and PSE Deposits and Reimb.</b>	<b>226,305</b>					
13	<b>Grand Total General Fund Revenue</b>	<b>4,540,131</b>	<b>5,057,679</b>	<b>3,214,344</b>	<b>4,998,082</b>	<b>(59,597)</b>	<b>-1.2%</b>

Total General Fund Revenue Sources



2012 General Fund Final Budget - Expenditures					
		2011 Amended Budget	2012 Final Budget	2011 & 2012 Budget Difference	Budget Change %
1	<b>EXPENDITURES by Department</b>				
2	Executive-Mayor	14,330	14,076	(254)	-1.8%
3	Legislative-Council	12,603	12,599	(4)	0.0%
4	Administration	150,954	153,399	2,445	1.6%
5	City Clerk	68,596	75,308	6,712	9.8%
6	Finance	280,962	281,405	443	0.2%
7	Information Services	142,332	145,160	2,828	2.0%
8	Facilities	98,718	99,821	1,103	1.1%
9	Facilities-Operating Costs (FA Reimb)	180,000	180,000	0	0.0%
10	Legal	104,000	104,500	500	0.5%
11	Municipal Court	229,887	204,319	(25,568)	-11.1%
12	Police Department	1,765,216	1,791,451	26,235	1.5%
13	Emergency Management	5,000	5,000	0	0.0%
14	Fire Department	432,142	446,337	14,195	3.3%
15	Animal Control	16,025	9,762	(6,263)	-39.1%
16	Community Development	387,469	413,977	26,508	6.8%
17	Natural Resources	159,144	162,485	3,341	2.1%
18	Economic Development	142,316	143,156	840	0.6%
19	Parks	72,428	69,323	(3,105)	-4.3%
20	Cemetery	17,445	17,277	(168)	-1.0%
21	Central Services	38,974	34,727	(4,247)	-10.9%
22	<b>Total Operating Expenses</b>	<b>4,318,541</b>	<b>4,364,082</b>	<b>45,541</b>	<b>1.1%</b>
23	Other Exp - MPD & Developer Agreement	730,175	634,000	(96,175)	-13.2%
24	<b>Total Expenditures</b>	<b>5,048,716</b>	<b>4,998,082</b>	<b>(50,634)</b>	<b>-1.0%</b>
25	Ending Fund Balance	171,805	201,743	29,938	17.4%
26	Ending Fund Balance - Partners	163,790	255,590	91,800	56.0%
27	<b>Total Ending Fund Balance</b>	<b>335,595</b>	<b>457,333</b>	<b>121,738</b>	<b>36.3%</b>
28	<b>Total General Fund Uses</b>	<b>5,384,311</b>	<b>5,455,415</b>	<b>71,104</b>	<b>1.3%</b>



# Black Diamond Final Budget | 2012

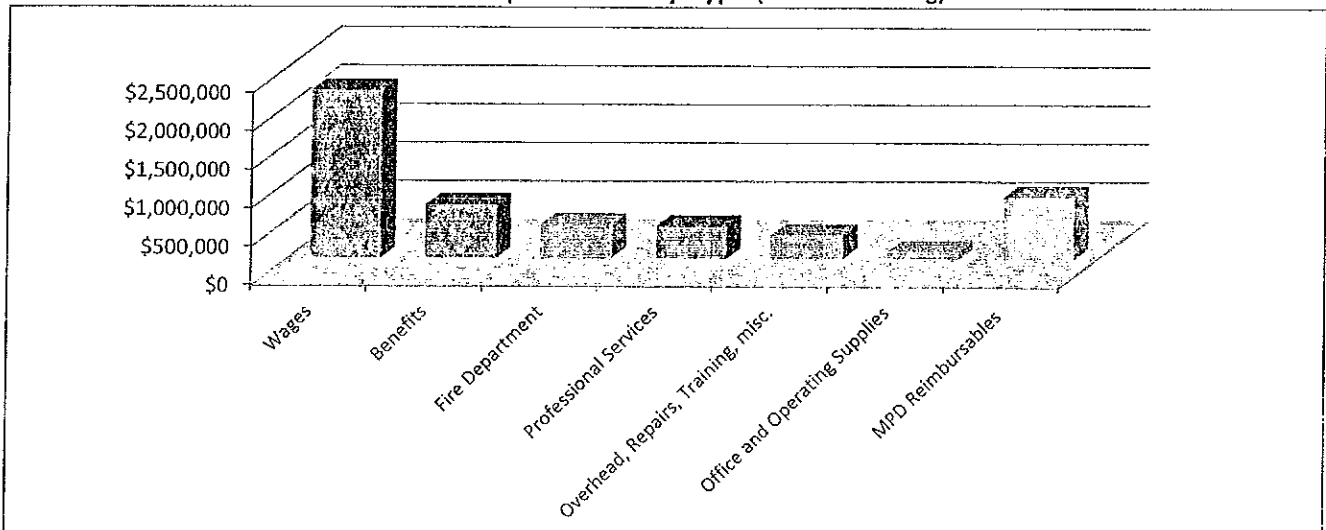
General Fund Expenditure Summary		2010 Actual	2011 Amended Budget	2011 Act thru August	2012 Final Budget	11 to 12 Budget Change	% Budget Change
1	<b>Public Safety</b>						
2	Prosecuting Attorney	48,000	48,000	28,200	48,000	-	-
3	Municipal Court	209,134	229,887	130,504	204,319	(25,568)	-11.1%
4	Police Department	1,550,288	1,765,216	1,070,693	1,791,451	26,235	1.5%
5	Fire Department	408,774	432,142	217,416	446,337	14,195	3.3%
6	Animal Control	-	16,025	15,663	9,762	(6,263)	-39.1%
7	EMS Management	-	5,000	502	5,000	-	
8	<b>Total Public Safety</b>	<b>2,216,196</b>	<b>2,496,270</b>	<b>1,462,977</b>	<b>2,504,869</b>	<b>8,599</b>	<b>-45.4%</b>
9	<b>Maintenance of Building and Grounds</b>						
10	Information Services	129,528	142,332	88,496	145,160	2,828	2.0%
11	Capital Facilities , Maint and Operations	248,693	278,718	179,518	279,821	1,103	0.4%
12	Parks	61,597	72,428	40,344	69,323	(3,105)	-4.3%
13	Cemetery	15,834	17,445	10,207	17,277	(168)	-1.0%
14	Central Services	33,491	38,974	24,043	34,727	(4,247)	-10.9%
15	<b>Total Maintenance of Building and Grounds</b>	<b>489,143</b>	<b>549,897</b>	<b>342,608</b>	<b>546,308</b>	<b>(3,589)</b>	<b>-0.7%</b>
16	<b>Development of Community</b>						
17	Community Development	362,751	387,469	239,521	413,977	26,508	6.8%
18	Natural Resources	156,104	159,144	110,570	162,485	3,341	2.1%
19	Economic Development	131,251	142,316	88,998	143,156	840	0.6%
20	<b>Total Development of community</b>	<b>650,107</b>	<b>688,929</b>	<b>439,089</b>	<b>719,618</b>	<b>30,689</b>	<b>4.5%</b>
21	<b>Core Staff</b>						
22	Executive - Mayor	13,404	14,330	9,140	14,076	(254)	-1.8%
23	Legislative- City Council	11,660	12,603	6,379	12,599	(4)	0.0%
24	Administration	144,741	150,954	95,756	153,399	2,445	1.6%
25	City Clerk	73,345	68,596	48,288	75,308	6,712	9.8%
26	Finance	256,561	280,962	173,860	281,405	443	0.2%
27	Legal General	61,546	56,000	38,436	56,500	500	0.9%
28	<b>Total Core Staff</b>	<b>561,258</b>	<b>583,445</b>	<b>371,859</b>	<b>593,287</b>	<b>9,842</b>	<b>1.7%</b>
29	<b>Total Operating General Fund</b>	<b>3,916,704</b>	<b>4,318,541</b>	<b>2,616,534</b>	<b>4,364,082</b>	<b>45,541</b>	<b>1.1%</b>
30	MPD Annexations and EIS	704,708	695,175	367,366	634,000	(61,175)	-8.8%
31	One-time-only expenditures (legal & misc)	3,231	35,000			(35,000)	-100.0%
32	<b>Subtotal Funding and One-time-only</b>	<b>707,939</b>	<b>730,175</b>	<b>367,366</b>	<b>634,000</b>	<b>(96,175)</b>	<b>-13.2%</b>
33	<b>Total General Fund Expenditures</b>	<b>4,624,643</b>	<b>5,048,716</b>	<b>2,983,900</b>	<b>4,998,082</b>	<b>(50,634)</b>	<b>-1.0%</b>
34	Ending Cash and Investments Reserved	163,790	163,790	163,790	255,590	91,800	56.0%
35	Ending Cash and Investments	106,221	171,805	171,805	201,743	29,938	17.4%
36	<b>Total Ending C&amp;I Balance</b>	<b>270,011</b>	<b>335,595</b>	<b>335,595</b>	<b>457,333</b>	<b>121,738</b>	<b>36.3%</b>
37	<b>Total Uses General Fund</b>	<b>4,894,654</b>	<b>5,384,311</b>	<b>3,319,495</b>	<b>5,455,415</b>	<b>71,104</b>	<b>1.3%</b>



# Black Diamond Final Budget | 2012

General Fund NET Operating Summary	2012 Preliminary Budget	Less Funding Agreement	NET Expenditures
1 <b>Public Safety</b>			
2 Utilities and Other Building Costs	48,000		48,000
3 Municipal Court	204,319		204,319
4 Police Department	1,791,451		1,791,451
5 Fire Department	446,337		446,337
6 Animal Control	9,762		9,762
7 EMS Management	5,000		5,000
8 <b>Total Public Safety</b>	<b>2,504,869</b>		<b>2,504,869</b>
9 <b>Maintenance of Building and Grounds</b>			
10 Information Services	145,160	(136,001)	9,159
11 Capital Facilities , Maint and Operations	279,821	(271,161)	8,660
12 Parks	69,323	(13,976)	55,347
13 Cemetery	17,277	(285)	16,992
14 Central Services	34,727		34,727
15 <b>Total Maintenance of Building and Grounds</b>	<b>546,308</b>	<b>(421,423)</b>	<b>124,885</b>
16 <b>Development of Community</b>			
17 Community Development	413,977	(351,619)	62,358
18 Natural Resources	162,485	(139,413)	23,072
19 Economic Development	143,156	(135,857)	7,299
20 <b>Total Development of community</b>	<b>719,618</b>	<b>(626,889)</b>	<b>92,729</b>
21 <b>Core Staff</b>			
22 Executive - Mayor	14,076		14,076
23 Legislative- City Council	12,599		12,599
24 Administration	153,399	(147,816)	5,583
25 City Clerk	75,308		75,308
26 Finance	281,405	(242,990)	38,415
27 Legal General	56,500		56,500
28 <b>Total Core Staff</b>	<b>593,287</b>	<b>(390,806)</b>	<b>202,481</b>
29 <b>Total Operating General Fund</b>	<b>4,364,082</b>	<b>(1,439,118)</b>	<b>2,924,964</b>

**General Fund Expenditures by Type (includes funding)**



**General Fund Expenditures by Department**

# Black Diamond Final Budget | 2012

<b>Legislative Department Expenditures</b>		2010 Actual	2011 Amended Budget	2011 Act thru August	2012 Final Budget	11 to 12 Budget Change	% Budget Change
1	Council Wages (4 Council & Mayor Pro Tem)	10,080	10,080	5,040	10,080		0%
2	Benefits (Social Sec, L&I)	818	823	406	819	(4)	-0.5%
3	Lodging, Meals And Mileage	467	600	133	600		0%
4	Training And Workshops	200	1,000	800	1,000		0%
5	Miscellaneous	94	100		100		0%
6	<b>Legislative Total</b>	<b>11,660</b>	<b>12,603</b>	<b>6,379</b>	<b>12,599</b>	<b>(4)</b>	<b>-0.03%</b>

<b>Municipal Court Department Expenditures</b>		2010 Actual	2011 Amended Budget	2011 Act thru August	2012 Final Budget	11 to 12 Budget Change	% Budget Change
7	Municipal Court Wages (Supervisor & .5 Clerk)	91,468	105,924	67,071	96,913	(9,011)	-8.5%
8	Furlough (2011-5day, 2012-4 day)		(2,251)		(1,635)	616	-27.4%
9	Benefits (soc sec, retirement, medical ins, etc)	18,968	23,704	14,654	17,953	(5,751)	-24.3%
10	Operating Supplies	1,870	2,000	644	2,000		0%
11	Court Judge	43,200	36,000	21,000	36,000		0%
12	Protém Judge	1,614	1,800	390	800	(1,000)	-55.6%
13	Court-Public Defender	17,028	23,000	6,750	18,000	(5,000)	-21.7%
14	Court Interpreter	3,279	4,000	1,340	3,000	(1,000)	-25.0%
15	Prof Service/Jury List		500	597	500		0%
16	Telephone/DSL	3,479	3,500	2,142	3,500		0%
17	Postage	2,015	1,500	1,063	1,500		0%
18	Lodging, Meals & Mileage	402	150	411	400	250	166.7%
19	Insurance	1,990	2,060		2,688	628	30.5%
20	Copier Maintenance		250			(250)	-100%
21	Witness/Jury Fees		1,500		750	(750)	-50.0%
22	Training	150	350	200	350		0%
23	Printing and Binding	2,286	3,500	589	2,500	(1,000)	-28.6%
24	Memberships	415	450	337	450		0%
25	Shredding Services	274	450	166	450		0%
26	Police Security O/T	18,269	18,000	11,533	15,000	(3,000)	-16.7%
27	Security	241	1,200	140	700	(500)	-41.7%
28	Merchant Credit Card Fees	1,911	2,000	1,412	2,200	200	10.0%
29	Banking Fees and Miscellaneous Juror Costs	276	300	63	300		0%
30	<b>Municipal Court Total</b>	<b>209,134</b>	<b>229,887</b>	<b>130,504</b>	<b>204,319</b>	<b>(25,568)</b>	<b>-11.1%</b>

<b>Executive Department Expenditures</b>		2010 Actual	2011 Amended Budget	2011 Act thru August	2012 Final Budget	11 to 12 Budget Change	% Budget Change
31	Mayor Wages	12,000	12,000	8,000	12,000		0%
32	Benefits (soc sec, retirement, medical ins, etc)	970	980	648	976	(8)	-0.8%
33	Operating Supplies	56	100		100		0%
34	Lodging, Meals & Mileage	43	500	287	450	(50)	-10.0%
35	Miscellaneous		50		50		0%
36	Training & Workshop & Dues	335	700	205	500	(200)	-28.6%
37	<b>Executive Department Total</b>	<b>13,404</b>	<b>14,330</b>	<b>9,140</b>	<b>14,076</b>	<b>(254)</b>	<b>-1.8%</b>

<b>City Administration Expenditures</b>		2010 Actual	2011 Amended Budget	2011 Act thru August	2012 Final Budget	11 to 12 Budget Change	% Budget Change
38	City Administration Wages (Asst City Admin.)	107,616	113,400	74,152	113,400		0%
39	Furlough (2011-5day, 2012-4 day)		(2,405)		(1,923)	482	-20.0%
40	Benefits (soc sec, retirement, medical ins, etc)	32,847	32,764	21,604	36,340	3,429	10.5%
41	Office And Operating Supplies	24	100			(100)	-100%

General Fund Expenditures by Department, continued

<b>City Administration Expenditures, cont.</b>		<b>2010 Actual</b>	<b>2011 Amended Budget</b>	<b>2011 Act thru August</b>	<b>2012 Final Budget</b>	<b>11 to 12 Budget Change</b>	<b>% Budget Change</b>
42	Professional Services	1,500					
43	Telephone and Postage	6	100			(100)	-100%
44	Lodging, Meals & Mileage		600		600		0%
45	Training, Dues and Memberships		3,500		1,750	(1,750)	-50.0%
46	Insurance	2,749	2,845		3,232	387	13.6%
47	Miscellaneous		50			(50)	-100%
48	<b>City Administration Department Total</b>	<b>144,741</b>	<b>150,954</b>	<b>95,756</b>	<b>153,399</b>	<b>2,445</b>	<b>1.6%</b>

<b>City Clerk Expenditures</b>		<b>2010 Actual</b>	<b>2011 Amended Budget</b>	<b>2011 Act thru August</b>	<b>2012 Final Budget</b>	<b>11 to 12 Budget Change</b>	<b>% Budget Change</b>
49	City Clerk Wages (1 Dep Clerk > 60% to GF)*	32,242	36,192	23,664	36,192		0%
50	Furlough (2011-5day, 2012-4 day)		(810)		(648)	162	-20.0%
51	Benefits (soc sec, retirement, medical ins, etc)	15,631	16,123	10,720	18,256	2,133	13.2%
52	Elections Costs	5,060			5,100	5,100	100%
53	Special Election Costs	7,614					
54	Voter Registration Costs	5,389	6,450	6,450	6,500	50	0.8%
55	Office Supplies	237	250	175	200	(50)	-20.0%
56	Code Update	5,000	5,500	4,592	5,500		0%
57	Lodging, Meals & Mileage		1,800	980	1,200	(600)	-33.3%
58	Advertising	1,200	1,000	322	700	(300)	-30.0%
59	Insurance	573	592		708	116	19.6%
60	Workshops/training	125	1,100	1,000	1,200	100	9.1%
61	Memberships	275	400	385	400		0%
62	<b>City Clerk Department Total</b>	<b>73,345</b>	<b>68,596</b>	<b>48,288</b>	<b>75,308</b>	<b>6,712</b>	<b>9.8%</b>

63 \* Other 40% of wages and benefits are allocated to Utilities

<b>Finance Department Expenditures</b>		<b>2010 Actual</b>	<b>2011 Amended Budget</b>	<b>2011 Act thru August</b>	<b>2012 Final Budget</b>	<b>11 to 12 Budget Change</b>	<b>% Budget Change</b>
64	Finance Wages (Dir, Dep Dir & 60% Sr. Acct)*	208,915	224,532	142,980	224,532		0%
65	Furlough (2011-5day, 2012-4 day)		(5,123)		(4,085)	1,038	-20.3%
66	Benefits (soc sec, retirement, medical ins, etc)	40,355	47,051	28,743	51,258	3,917	8.3%
67	Office Supplies	448	600	352	600		0%
68	State Auditor Services	764	6,250		1,100	(5,150)	-82.4%
69	Tax Audit/microflex	1,213	1,800	1,211	1,300	(500)	-27.8%
70	Lodging, Meals & Mileage	819	1,000		1,000		0%
71	Advertising	293		138	300	300	100%
72	Insurance	2,852	2,952		3,500	548	18.6%
73	Workshops and Training	645	1,500	250	1,500		0%
74	Memberships and Miscellaneous	259	400	185	400		0%
75	<b>Finance Department Total</b>	<b>256,561</b>	<b>280,962</b>	<b>173,860</b>	<b>281,405</b>	<b>443</b>	<b>0.2%</b>

76 \* Sr. Accountant is a 75% FTE & allocated 40% to Utilities

General Fund Expenditures by Department, continued

<b>Information Technology Expenditures</b>		<b>2010 Actual</b>	<b>2011 Amended Budget</b>	<b>2011 Act thru August</b>	<b>2012 Final Budget</b>	<b>11 to 12 Budget Change</b>	<b>% Budget Change</b>
77	Information Technology Wages (I.T. Manager)	94,939	100,800	65,912	100,800		0%
78	Furlough (2011-5day, 2012-4 day)		(2,261)		(1,806)	455	-20.1%
79	Benefits (soc sec, retirement, medical ins, etc)	31,934	33,127	21,752	37,006	3,655	11.0%
80	Office supplies, small tools & minor equipment	526	550	218	300	(250)	-45.5%
81	Professional Services	330	5,000	280	4,000	(1,000)	-20.0%
82	Telephone/dsl		400	69	200	(200)	-50.0%
83	Lodging, Meals & Mileage	44	600		300	(300)	-50.0%
84	Insurance	1,441	1,491		1,710	219	14.7%
85	Repairs and Maintenance	288	500		500		0%
85	Training and Workshops		2,000	252	2,000		0%
87	Miscellaneous and Memberships	26	125	13	150	25	20.0%
88	<b>Information Technology Total</b>	<b>129,528</b>	<b>142,332</b>	<b>88,496</b>	<b>145,160</b>	<b>2,828</b>	<b>2.0%</b>

<b>Legal Services Expenditures*</b>		<b>2010 Actual</b>	<b>2011 Amended Budget</b>	<b>2011 Act thru August</b>	<b>2012 Final Budget</b>	<b>11 to 12 Budget Change</b>	<b>% Budget Change</b>
89	Legal Services-General	53,235	49,500	31,877	50,000	500	1.0%
90	Legal Services - Employment	1,661	2,000	3,282	2,000		0%
91	Prosecuting Attorney	48,000	48,000	28,200	48,000		0%
92	Legal Svcs Police Contract	2,852	3,500	1,884	3,500		0%
93	Legal-Lawsuits-Other Charges	3,798	1,000	1,394	1,000		0%
94	<b>Legal Services Total</b>	<b>109,546</b>	<b>104,000</b>	<b>66,636</b>	<b>104,500</b>	<b>500</b>	<b>0.5%</b>

95 \*Legal Services are provided by prof. service contracts

<b>Central Services Expenditures</b>		<b>2010 Actual</b>	<b>2011 Amended Budget</b>	<b>2011 Act thru August</b>	<b>2012 Final Budget</b>	<b>11 to 12 Budget Change</b>	<b>% Budget Change</b>
96	Office and Operating Supplies	4,887	6,925	3,733	5,700	(1,225)	-17.7%
97	Telephone and Postage	3,144	6,325	2,559	3,925	(2,400)	-37.9%
98	Memberships	5,767	6,600	5,516	5,875	(725)	-11.0%
99	Employee recognition and celebration	399	1,100		900	(200)	-18.2%
100	Vehicle Repairs and Maintenance	878	500		500		0%
101	Software and Copier Maintenance	3,510	4,350	4,310	4,350		0%
102	Retreat-Travel & Training		1,000		800	(200)	-20.0%
103	Advertising	1,010	1,200			(1,200)	-100.0%
104	Insurance Pooled Vehicles	2,100	2,174		977	(1,197)	-55.1%
105	Insurance Deductible	2,971	300	1,000	1,000	700	233.3%
106	C/S Fuel	157	300	2,133	3,500	3,200	1066.7%
107	CH/CD/PW Bldg Maintenance & Repair	1,920	2,000	110	1,000	(1,000)	-50.0%
108	Banking Fees	2,415	2,200	672	1,300	(900)	-40.9%
109	Merchant Card Service Fees	1,983	1,500	1,646	2,000	500	33.3%
110	Miscellaneous	353		421	600	600	100%
111	Printing Vouchers/Receipts	651	1,200	1,152	1,200		0%
112	Shredding Services	300	300			(300)	-100%
113	KC Mental Health	1,044	1,000	791	1,100	100	10.0%
114	<b>Central Service Expenditures</b>	<b>33,491</b>	<b>38,974</b>	<b>24,043</b>	<b>34,727</b>	<b>(4,247)</b>	<b>-10.9%</b>

# Black Diamond Final Budget | 2012

## General Fund Expenditures by Department, continued

<b>Capital Facilities Expenditures</b>		<b>2010 Actual</b>	<b>2011 Amended Budget</b>	<b>2011 Act thru August</b>	<b>2012 Final Budget</b>	<b>11 to 12 Budget Change</b>	<b>% Budget Change</b>
115	Facilities Wages (Capital Facilities Coordinator)	65,557	69,083	45,174	69,083		0%
116	Furlough (2011-5day, 2012-4 day)		(1,446)		(1,154)	292	-20.2%
117	Benefits (soc sec, retirement, medical ins, etc)	20,816	22,687	14,549	23,231	544	2.4%
118	Office, Operating Supplies and Uniforms	1,424	900	369	600	(300)	-33.3%
119	Fuel	1,791	2,600	1,083	3,500	900	34.6%
120	Small Tools and Equipment	180	400	519	550	150	37.5%
121	Insurance	967	1,444		1,611	167	11.6%
122	Vehicle Maint, Repair and Miscellaneous	1,471	2,450	978	1,800	(650)	-26.5%
123	Training		600		600		0%
124	<b>Facilities Subtotal</b>	<b>92,207</b>	<b>98,718</b>	<b>62,672</b>	<b>99,821</b>	<b>1,103</b>	<b>1.1%</b>
125	<b>Funding - Maintenance</b>						
126	Building and Land Leases	105,221	107,540	76,053	107,540		0%
127	Utilities and Other Building Costs	51,265	72,460	40,793	72,460		0%
128	<b>Funding Maintenance Subtotal</b>	<b>156,486</b>	<b>180,000</b>	<b>116,846</b>	<b>180,000</b>		<b>0%</b>
129	<b>Capital Facilities and Funding Maint. Total</b>	<b>248,693</b>	<b>278,718</b>	<b>179,518</b>	<b>279,821</b>	<b>1,103</b>	<b>0.4%</b>

<b>Animal Control Expenditures</b>		<b>2010 Actual</b>	<b>2011 Amended Budget</b>	<b>2011 Act thru August</b>	<b>2012 Final Budget</b>	<b>11 to 12 Budget Change</b>	<b>% Budget Change</b>
130	Animal Control Professional Services		16,025	15,663	9,762	(6,263)	-39.1%
131	<b>Total Animal Control Expenses</b>		<b>16,025</b>	<b>15,663</b>	<b>9,762</b>	<b>(6,263)</b>	<b>-39.1%</b>

<b>Emergency Management Expenditures</b>		<b>2010 Actual</b>	<b>2011 Amended Budget</b>	<b>2011 Act thru August</b>	<b>2012 Final Budget</b>	<b>11 to 12 Budget Change</b>	<b>% Budget Change</b>
132	Emergency Management Training			270			
133	EMS MGMT Operating Supplies		5,000	233	5,000		0%
134	<b>Total Emergency Management Expenses</b>		<b>5,000</b>	<b>502</b>	<b>5,000</b>		<b>0%</b>

<b>Police Department Expenditures Summary</b>		<b>2010 Actual</b>	<b>2011 Amended Budget</b>	<b>2011 Act thru August</b>	<b>2012 Final Budget</b>	<b>11 to 12 Budget Change</b>	<b>% Budget Change</b>
135	Operating Expenditures	1,339,503	1,497,274	955,136	1,542,625	45,351	3.0%
136	Communications	107,985	136,980	59,014	147,425	10,445	7.6%
137	Capital Equipment	12,926	3,000	2,287	3,000		0%
138	Jail Expenditures	42,634	43,000	11,155	28,000	(15,000)	-34.9%
139	Building Costs	19,584	22,500	13,828	19,995	(2,505)	-11.1%
140	Civil Service	1,575	3,660	448	2,660	(1,000)	-27.3%
141	Marine	10,010	22,262	2,596	13,781	(8,481)	-38.1%
142	Criminal Justice	16,070	36,540	26,230	33,965	(2,575)	-7.0%
143	<b>Police Total</b>	<b>1,550,288</b>	<b>1,765,216</b>	<b>1,070,693</b>	<b>1,791,451</b>	<b>26,235</b>	<b>1.5%</b>

# Black Diamond Final Budget | 2012

## General Fund Expenditures by Department, continued

<b>Police Operating Expenditures</b>		<b>2010 Actual</b>	<b>2011 Amended Budget</b>	<b>2011 Act thru August</b>	<b>2012 Final Budget</b>	<b>11 to 12 Budget Change</b>	<b>% Budget Change</b>
144	Police Dept Wages	880,828	949,744	652,520	1,001,249	51,505	5.4%
145	Furlough Support Staff (2011-5day, 2012-4 day)		(1,904)		(1,523)	381	-20.0%
146	Benefits (soc sec, retirement, medical ins, etc.)	327,403	382,315	228,785	362,833	(19,482)	-5.1%
147	Overtime	38,621	45,000	26,766	40,000	(5,000)	-11.1%
148	Outside Overtime Reimb	(915)	(1,000)			1,000	-100.0%
149	Overtime - Court Reimb	(18,269)	(18,000)	(11,533)	(15,000)	3,000	-16.7%
150	Marine & K9 Overtime and Reimbursement		1,000		15,500	14,500	1450.0%
151	<b>Police Salary and Benefit Subtotal</b>	<b>1,227,668</b>	<b>1,357,155</b>	<b>896,538</b>	<b>1,403,059</b>	<b>45,904</b>	<b>3.4%</b>
152	Uniforms	9,609	12,350	9,789	10,200	(2,150)	-17.4%
153	Operating Supplies	5,246	9,000	1,320	5,500	(3,500)	-38.9%
154	Fuel	26,978	35,000	22,760	35,000		0%
155	Firearms Program	5,220	15,000	3,596	7,500	(7,500)	-50.0%
156	Lodging, Meals & Mileage	1,179	2,500	705	1,500	(1,000)	-40.0%
157	Training	3,094	5,000	1,773	8,283	3,283	65.7%
158	Memberships	1,034	2,900	1,185	2,000	(900)	-31.0%
159	Professional Services (KC Sheriff, leads Online)	3,931		3,536	1,428	1,428	100%
160	Towing Services	239	500	939	1,000	500	100%
161	Insurance	34,420	35,629	435	44,760	9,131	25.6%
162	Vehicle Maintenance & Repairs	17,545	18,000	10,116	18,295	295	1.6%
163	Repairs & Maint - Copier	810		286	300	300	100%
164	Lease Payments - US Bank/Copier	711	1,740	1,260	1,900	160	9.2%
165	DUI Rec Costs/Equip Purchased	196	200	150	200		0%
166	Printing	675	700	147	700		0%
167	Merchant Card Service Fees	671	700	492	700		0%
168	Miscellaneous, shredding, advertising	278	900	108	300	(600)	-66.7%
169	<b>Police Other Operating Expenses Subtotal</b>	<b>111,835</b>	<b>140,119</b>	<b>58,598</b>	<b>139,566</b>	<b>(553)</b>	<b>-0.4%</b>
170	<b>Police Salaries and Operating Total</b>	<b>1,339,503</b>	<b>1,497,274</b>	<b>955,136</b>	<b>1,542,625</b>	<b>45,351</b>	<b>3.0%</b>

<b>Police Communication Expenditures</b>		<b>2010 Actual</b>	<b>2011 Amended Budget</b>	<b>2011 Act thru August</b>	<b>2012 Final Budget</b>	<b>11 to 12 Budget Change</b>	<b>% Budget Change</b>
171	Valley Comm - Dispatch Service	67,964	87,660	35,366	95,275	7,615	8.7%
172	V Comm - MDT's & in 2012 Netmotion	1,620	2,120		850	(1,270)	-59.9%
173	K/C 800 Mhz Radio Costs	12,288	14,000	7,157	12,300	(1,700)	-12.1%
174	Valley Comm - Access Charge	596	600	298	600		0%
175	Auburn WSP Access	1,000	1,000	1,000	1,000		0%
176	Valley Comm - Tiberon System Tunnel				12,000	12,000	100%
177	Police Telephone/DSL/Air Cards	16,789	20,000	10,317	15,500	(4,500)	-22.5%
178	Police Comm KC I-Net	4,136	5,000	3,000	4,500	(500)	-10.0%
179	WSP Access	2,640	2,600	1,320	2,600		0%
180	Police Postage	884	1,000	336	1,400	400	40.0%
181	K/C Radio Maint. & Repair	68	3,000	221	1,400	(1,600)	-53.3%
182	<b>Police Communications Total</b>	<b>107,985</b>	<b>136,980</b>	<b>59,014</b>	<b>147,425</b>	<b>10,445</b>	<b>7.6%</b>

<b>Police Capital Expenditures</b>		<b>2010 Actual</b>	<b>2011 Amended Budget</b>	<b>2011 Act thru August</b>	<b>2012 Final Budget</b>	<b>11 to 12 Budget Change</b>	<b>% Budget Change</b>
183	Police CTED Grant EQ	9,548					
184	Traffic Safety Equipment	3,378	3,000	2,287	3,000		0%
185	<b>Police Capital Total</b>	<b>12,926</b>	<b>3,000</b>	<b>2,287</b>	<b>3,000</b>		<b>0%</b>

General Fund Expenditures by Department, continued

<b>Police Jail Expenditures</b>							
	2010 Actual	2011 Amended Budget	2011 Act thru August	2012 Final Budget	11 to 12 Budget Change	% Budget Change	
186	Jail Costs	39,193	40,000	10,192	25,000	(15,000)	-37.5%
187	Electronic Home Monitor Costs	2,582	1,500	768	1,500		0%
188	Prisoner Medical Costs	860	1,000		1,000		0%
189	Work Crew Costs-State Exp		500	195	500		0%
190	<b>Police Jail Total</b>	<b>42,634</b>	<b>43,000</b>	<b>11,155</b>	<b>28,000</b>	<b>(15,000)</b>	<b>-34.9%</b>

<b>Police Building Expenditures</b>							
	2010 Actual	2011 Amended Budget	2011 Act thru August	2012 Final Budget	11 to 12 Budget Change	% Budget Change	
191	Police Bldg Mtc Sup	775	1,000	571	1,000		0%
192	Police Custodial Cost	6,771	6,000	4,435	6,000		0%
193	Utilities	10,519	13,800	7,386	11,095	(2,705)	-19.6%
194	Police Bldg Repairs	876	1,000	846	1,000		0%
195	Brinks Security	643	700	590	900	200	28.6%
196	<b>Police Building Total</b>	<b>19,584</b>	<b>22,500</b>	<b>13,828</b>	<b>19,995</b>	<b>(2,505)</b>	<b>-11.1%</b>

<b>Police Civil Service Expenditures</b>							
	2010 Actual	2011 Amended Budget	2011 Act thru August	2012 Final Budget	11 to 12 Budget Change	% Budget Change	
197	Civil Service Testing	348	660	375	660		0%
198	Civil Service-Hiring Evaluations	634	2,000		1,000	(1,000)	-50.0%
199	Communications, lodging, meals, mileage	223		73			
200	Civil Service Training	370	1,000		1,000		0%
201	<b>Civil Service Total</b>	<b>1,575</b>	<b>3,660</b>	<b>448</b>	<b>2,660</b>	<b>(1,000)</b>	<b>-27.3%</b>

<b>Police Marine Expenditures*</b>							
	2010 Actual	2011 Amended Budget	2011 Act thru August	2012 Final Budget	11 to 12 Budget Change	% Budget Change	
202	*Marine Staffing Expenditures are included in salaries and benefits in Police Operating						
203	<b>King County Vessel Registration</b>						
204	Operating Expenditures	3,269	2,750	1,351	1,781	(969)	-35.2%
205	Repairs and Maintenance	4,266	1,500	372	1,200	(300)	-20.0%
206	Lodging, Meals & Mileage VRF	2,093	100	863	300	200	200%
207	Training and Advertising	31	2,170	10		(2,170)	-100%
208	Carryover from prior year	351	10,389		10,500	111	1.1%
209	<b>Subtotal VRF</b>	<b>10,010</b>	<b>16,909</b>	<b>2,596</b>	<b>13,781</b>	<b>(3,128)</b>	<b>-18.5%</b>
210	<b>Coast Guard Grant</b>						
211	Marine Grant Repairs & Maint 07/11-06/12		3,353			(3,353)	-100%
212	Marine Grant Fuel 07/11-06/12		1,000			(1,000)	-100%
213	Marine Grant Training 07/11-06/12		1,000			(1,000)	-100%
214	<b>Subtotal Coast Guard Grant</b>		<b>5,353</b>			<b>(8,481)</b>	<b>-158.4%</b>
215	<b>Police Marine Total</b>	<b>10,010</b>	<b>22,262</b>	<b>2,596</b>	<b>13,781</b>	<b>(11,609)</b>	<b>-52.1%</b>

<b>Police Criminal Justice Expenditures</b>							
	2010 Actual	2011 Amended Budget	2011 Act thru August	2012 Final Budget	11 to 12 Budget Change	% Budget Change	
216	Operating Supplies	1,164	1,750	113	1,450	(300)	-17.1%
217	Spillman Records Maintenance		11,100	11,050	12,000	900	8.1%
218	Training and building rental for training	7,900	11,590	9,495	11,590		0%
219	Lodging, Meals & Mileage	406	2,500	1,501	2,500		0%
220	Lexipol	2,450	5,950	2,950	4,000	(1,950)	-32.8%
221	Investigations	2,025					
222	K-9 Program	563	600	653	1,000	400	66.7%
223	DARE Program	1,562	3,050	467	1,425	(1,625)	-53.3%
224	<b>Criminal Justice Total</b>	<b>16,070</b>	<b>36,540</b>	<b>26,230</b>	<b>33,965</b>	<b>(2,575)</b>	<b>-7.0%</b>

## General Fund Expenditures by Department, continued

<b>Natural Resources Expenditures</b>		<b>2010 Actual</b>	<b>2011 Amended Budget</b>	<b>2011 Act thru August</b>	<b>2012 Final Budget</b>	<b>11 to 12 Budget Change</b>	<b>% Budget Change</b>
225	Stewardship Wages (Natural Res Director)	98,238	103,515	67,887	103,515		0%
226	Furlough (2011-5day, 2012-4 day)		(2,168)		(1,756)	412	-19.0%
227	Benefits (soc sec, retirement, medical ins, etc)	32,313	33,721	21,932	37,654	3,933	11.7%
228	Operating Supplies	281	250	165		(250)	-100%
229	Powerful Choices PSE	500					
230	Professional Services and Advertising	210		350			
231	Lodging, Meals & Mileage	11	250			(250)	-100%
232	Insurance	1,532	1,586		1,820	234	14.8%
233	Training	(45)	250		250		0%
234	Recycling Program Grant	18,065	18,900	18,002	18,002	(898)	-4.8%
235	PS Clean Air Assmt	2,236	2,190	2,219	2,300	110	5.0%
236	WRIA 9 Membership (water quality)	2,507					
237	Printing Binding and other Miscellaneous	256	650	15	700	50	7.7%
238	<b>Natural Resources Total</b>	<b>156,104</b>	<b>159,144</b>	<b>110,570</b>	<b>162,485</b>	<b>3,341</b>	<b>2.1%</b>

<b>Community Development Expenditure Summary</b>		<b>2010 Actual</b>	<b>2011 Amended Budget</b>	<b>2011 Act thru August</b>	<b>2012 Final Budget</b>	<b>11 to 12 Budget Change</b>	<b>% Budget Change</b>
239	Administration		217	20,925		(217)	-100%
240	Planning	144,636	167,769	100,666	170,807	3,038	1.8%
241	Permitting	184,013	171,009	101,910	188,930	17,921	10.5%
242	Code Enforcement	34,102	43,474	13,775	49,240	5,766	13.3%
243	Hearing Examiner		5,000	2,245	5,000		0%
244	<b>Community Development Total</b>	<b>362,751</b>	<b>387,469</b>	<b>239,521</b>	<b>413,977</b>	<b>26,508</b>	<b>6.8%</b>

<b>Community Dev Expenditure Summary - Administration</b>		<b>2010 Actual</b>	<b>2011 Amended Budget</b>	<b>2011 Act thru August</b>	<b>2012 Final Budget</b>	<b>11 to 12 Budget Change</b>	<b>% Budget Change</b>
245	Comm Dev Administration Wages (Director)	102,981	108,514	70,952	108,514		0%
246	Furlough (2011-5day, 2012-4 day)		(2,108)		(1,671)	437	-20.7%
247	Benefits (soc sec, retirement, medical ins, etc)	20,588	23,807	15,306	25,972	2,165	9.1%
248	Office And Operating Supplies	2,241			100	100	100%
249	Lodging, Meals & Mileage	192	500		600	100	20.0%
250	Training		500	99	400	(100)	-20.0%
251	Insurance	1,439	1,489		1,737	248	16.7%
252	Memberships	625	550	406	600	50	9.1%
253	Vehicle Maintenance & Repair	18					
254	Miscellaneous	1,161		231	100	100	100%
255	CD Administration Allocation	(129,227)	(133,035)	(66,069)	(136,352)	(3,317)	2.5%
255	<b>CD Administration Total</b>		<b>217</b>	<b>20,925</b>		<b>(217)</b>	<b>-100.0%</b>

<b>Planning Expenditure Summary</b>		<b>2010 Actual</b>	<b>2011 Amended Budget</b>	<b>2011 Act thru August</b>	<b>2012 Final Budget</b>	<b>11 to 12 Budget Change</b>	<b>% Budget Change</b>
256	Planning Wages (Associate Planner)	42,035	66,956	43,780	66,956		0%
257	Furlough (2011-5day, 2012-4 day)		(1,495)		(1,194)	301	-20.1%
258	Benefits (soc sec, retirement, medical ins, etc)	10,086	17,662	11,387	19,463	1,801	10.2%
259	Office and Operating Supplies	967	1,800	324	750	(1,050)	-58.3%
260	Advertising	1,545	400	232	350	(50)	-12.5%
261	Professional Services	1,858					
262	Communications		100	168	150	50	50.0%
263	Lodging, Meals & Mileage		500		600	100	20.0%
264	Training and Memberships	475	900	510	850	(50)	-5.6%
265	Insurance	1,087	1,125		1,071	(54)	-4.8%
266	CD Admin Allocation	86,582	79,821	44,266	81,811	1,990	2.5%
267	<b>Planning Total</b>	<b>144,636</b>	<b>167,769</b>	<b>100,666</b>	<b>170,807</b>	<b>3,038</b>	<b>1.8%</b>



General Fund Expenditures by Department, continued

<b>Permitting Expenditure Summary</b>		<b>2010 Actual</b>	<b>2011 Amended Budget</b>	<b>2011 Act thru August</b>	<b>2012 Final Budget</b>	<b>11 to 12 Budget Change</b>	<b>% Budget Change</b>
268	Permitting Wages (Permitting Supervisor)	112,654	81,712	53,721	78,624	(3,088)	-3.8%
269	Furlough (2011-5day, 2012-4 day)		(1,760)		(1,408)	352	-20.0%
270	Benefits (soc sec, retirement, medical ins, etc)	25,209	19,832	12,866	21,366	1,534	7.7%
271	Office and Operating Supplies	1,598	1,300	510	850	(450)	-34.6%
272	Bldg Insp and Plan Check		16,146	8,125	34,500	18,354	113.7%
273	Fire Insp and Plan Check	450	500	203	500		0%
274	Permit Software Maintenance	7,994	8,200	8,139	8,200		0%
275	Telephone and Postage	115	100	196	200	100	100%
276	Lodging, Meals & Mileage	285	250		600	350	140.0%
277	Training and Memberships	655	350	255	550	200	57.1%
278	Advertising and Miscellaneous		1,500	809	1,050	(450)	-30.0%
279	Insurance	1,805	1,868		2,292	424	22.7%
280	Merch Card Service Fees	942	1,100	569	700	(400)	-36.4%
281	CD Admin Allocation	32,307	39,911	16,517	40,906	995	2.5%
282	<b>Permitting Total</b>	<b>184,013</b>	<b>171,009</b>	<b>101,910</b>	<b>188,930</b>	<b>17,921</b>	<b>10.5%</b>

<b>Code Enforcement Expenditure Summary</b>		<b>2010 Actual</b>	<b>2011 Amended Budget</b>	<b>2011 Act thru August</b>	<b>2012 Final Budget</b>	<b>11 to 12 Budget Change</b>	<b>% Budget Change</b>
283	Code Enforcement Wages (prof svcs mid-2011)	19,500	4,068	3,468		(4,068)	-100%
284	Benefits (soc sec, retirement, medical ins, etc)	3,042	543	541		(543)	-100%
285	Operating Supplies	23	200			(200)	-100%
286	Code Enforc Prof Services	585	24,725	4,480	35,000	10,275	41.6%
287	Insurance	614	635		605	(30)	-4.7%
288	CD Admin Allocation	10,338	13,303	5,286	13,635	332	2.5%
289	<b>Code Enforcement Total</b>	<b>34,102</b>	<b>43,474</b>	<b>13,775</b>	<b>49,240</b>	<b>5,766</b>	<b>13.3%</b>

<b>Hearing Examiner Expenditure Summary</b>		<b>2010 Actual</b>	<b>2011 Amended Budget</b>	<b>2011 Act thru August</b>	<b>2012 Final Budget</b>	<b>11 to 12 Budget Change</b>	<b>% Budget Change</b>
290	Prof Serv-Hearing Examiner		5,000		5,000		0%
291	Prof Serv- Planning			2,245			
292	<b>Hearing Examiner Total</b>		<b>5,000</b>	<b>2,245</b>	<b>5,000</b>		<b>0%</b>

<b>Economic Development Expenditure Summary</b>		<b>2010 Actual</b>	<b>2011 Amended Budget</b>	<b>2011 Act thru August</b>	<b>2012 Final Budget</b>	<b>11 to 12 Budget Change</b>	<b>% Budget Change</b>
293	Economic Development Wages (Director)	97,152	102,372	66,936	102,372		0%
294	Furlough (2011-5day, 2012-4 day)		(2,190)		(1,736)	454	-20.7%
295	Benefits (soc sec, retirement, medical ins, etc)	32,181	33,264	21,743	35,220	1,956	5.9%
296	Office And Operating Supplies	222	1,100		300	(800)	-72.7%
297	Communications	58	1,000			(1,000)	-100%
298	Lodging, Meals & Mileage	122	1,900	220	1,900		0%
299	Lodging, Meals & Mileage Reimb		500		500		0%
300	Insurance	1,516	1,570		1,800	230	14.6%
301	Miscellaneous, Printing & Binding		450		450		0%
302	Training Workshops and Memberships		2,350	99	2,350		0%
303	<b>Economic Development Total</b>	<b>131,251</b>	<b>142,316</b>	<b>88,998</b>	<b>143,156</b>	<b>840</b>	<b>0.6%</b>

# Black Diamond Final Budget | 2012

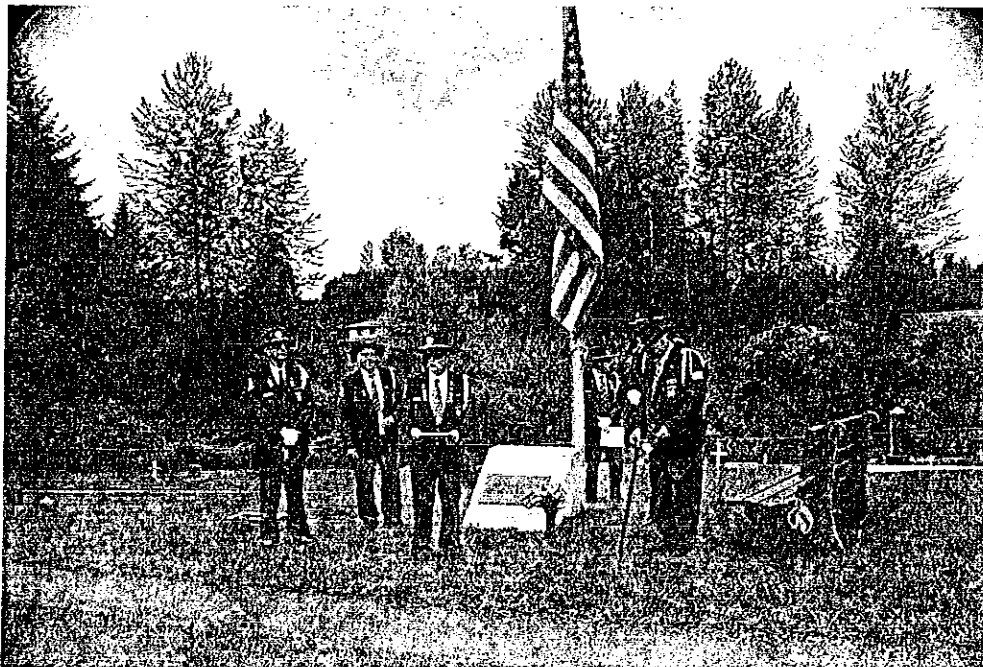
## General Fund Expenditures by Department, continued

<b>Parks and Recreation Expenditure Summary</b>		<b>2010 Actual</b>	<b>2011 Amended Budget</b>	<b>2011 Act thru August</b>	<b>2012 Final Budget</b>	<b>11 to 12 Budget Change</b>	<b>% Budget Change</b>
304	Parks Wages (8% Util. Sal & 2% of Admin Asst) *	25,699	26,276	17,620	26,276		0%
305	Furlough (2011-5day, 2012-4 day)		(230)		(181)	49	-21.3%
306	Benefits (soc sec, retirement, medical ins, etc)	8,812	9,321	6,046	10,005	684	7.3%
307	Operating Supplies	3,082	2,200	1,319	2,360	160	7.3%
308	Fuel	818	1,100	685	1,100		0%
309	Utilities	2,379	2,820	1,918	3,166	346	12.3%
310	Telephone and Postage	313	600	162	700	100	16.7%
311	Repairs and Maintenance	1,581	1,600	1,013	1,700	100	6.3%
312	Professional Services		1,000	510	1,000		0%
313	Rental of Equipment		550			(550)	-100%
314	Insurance	4,333	4,487		3,291	(1,196)	-26.7%
315	Portable Restroom Facility	3,391	5,000	3,191	5,000		0%
316	Venue Pay Station	1,618	1,800	1,258	1,710	(90)	-5.0%
317	Park Signage	37	600		300	(300)	-50.0%
318	Miscellaneous and Security	143	100	228	308	208	208.0%
319	Merchant Card Service Fees	371	400	173	185	(215)	-53.8%
320	Parks Equipment	125	2,250	2,245		(2,250)	-100%
321	<b>Parks Subtotal</b>	<b>52,701</b>	<b>59,874</b>	<b>36,366</b>	<b>56,920</b>	<b>(2,954)</b>	<b>-4.9%</b>
322	<i>* Other portion of salaries are allocated to utilities &amp; cemetery</i>						
323	<b>Museum and Community Center</b>						
324	Museum Insurance	976	1,010		1,195	185	18.3%
325	Museum Electric/Gas	3,376	5,000	2,800	5,100	100	2.0%
326	Museum Water/Sewer/Storm	1,110	1,300	884	1,300		0%
327	Community Event Supplies	1,768	3,500	90	2,000	(1,500)	-42.9%
328	Community Center Insurance	1,394	1,444		1,249	(195)	-13.5%
329	Community Gym Insurance				1,249	1,249	100%
330	Comm Center Water/Sewer/Storm	273	300	205	310	10	3.3%
331	<b>Museum and Community Center Subtotal</b>	<b>8,896</b>	<b>12,554</b>	<b>3,978</b>	<b>12,403</b>	<b>(151)</b>	<b>-1.2%</b>
332	<b>Parks and Recreation Total</b>	<b>61,597</b>	<b>72,428</b>	<b>40,344</b>	<b>69,323</b>	<b>(3,105)</b>	<b>-4.3%</b>
<b>Cemetery Expenditure Summary</b>		<b>2010 Actual</b>	<b>2011 Amended Budget</b>	<b>2011 Act thru August</b>	<b>2012 Final Budget</b>	<b>11 to 12 Budget Change</b>	<b>% Budget Change</b>
333	Cemetery Wages (2% Util. Sal & 8% Admin Ast.)	9,535	10,071	6,694	10,071		0%
334	Furlough (2011-5day, 2012-4 day)		(125)		(99)	26	-20.8%
335	Benefits (soc sec, retirement, medical ins, etc)	3,710	4,030	2,609	4,294	264	6.6%
336	Operating Supplies	180	550	31	495	(55)	-10.0%
337	Vaults/Liners	1,259	500		500		0%
338	Fuel	200	400	171	400		0%
339	Telephone, DSL, Radios and Postage	78	200	40	75	(125)	-62.5%
340	Utilities	339	850	510	717	(133)	-15.6%
341	Insurance	163	169		199	30	17.8%
342	Maintenance and Repairs	237	700	81	200	(500)	-71.4%
343	Misc, Excise Tax, Security	133	100	69	425	325	325.0%
344	<b>Cemetery Total</b>	<b>15,834</b>	<b>17,445</b>	<b>10,207</b>	<b>17,277</b>	<b>(168)</b>	<b>-1.0%</b>
345	<i>* Other portion of salaries are allocated to utilities &amp; parks</i>						

## General Fund Expenditures by Department, continued

<b>Fire Department Expenditure Summary</b>		<b>2010 Actual</b>	<b>2011 Amended Budget</b>	<b>2011 Act thru August</b>	<b>2012 Final Budget</b>	<b>11 to 12 Budget Change</b>	<b>% Budget Change</b>
346	Fire Dist 44 Prof Serv	405,925	428,585	214,293	442,300	13,715	3.2%
347	PR Svcs KC Fire Investigation	1,322	2,032	2,130	2,032		0%
348	Utilities	744	1,260	836	1,660	400	31.7%
349	Miscellaneous	784	265	157	345	80	30.2%
350	<b>Fire Department Total</b>	<b>408,774</b>	<b>432,142</b>	<b>217,416</b>	<b>446,337</b>	<b>14,195</b>	<b>3.3%</b>
351	<b>Subtotal Gen Fund Operating Expenditures</b>	<b>3,916,704</b>	<b>4,318,541</b>	<b>2,616,534</b>	<b>4,364,082</b>	<b>45,541</b>	<b>1.1%</b>

<b>Funding Agreement Expenditures (includes deposits and pass-thru)</b>		<b>2010 Actual</b>	<b>2011 Amended Budget</b>	<b>2011 Act thru August</b>	<b>2012 Final Budget</b>	<b>11 to 12 Budget Change</b>	<b>% Budget Change</b>
352	MPDs, EIS and SEPA	704,708	695,175	367,366	634,000	(61,175)	-8.8%
353	One time Legal Services		35,000			(35,000)	-100%
354	Other Projects and Pass-thru	3,231					
355	<b>Funding Agreement Total</b>	<b>707,939</b>	<b>730,175</b>	<b>367,366</b>	<b>634,000</b>	<b>(96,175)</b>	<b>-13.2%</b>
356	<b>Grand Total General Fund Expenditures</b>	<b>4,624,643</b>	<b>5,048,716</b>	<b>2,983,900</b>	<b>4,998,082</b>	<b>(50,634)</b>	<b>-1.0%</b>



Memorial Day 2011 at the historic Black Diamond Cemetery

**2012 Final Budget Summary**  
**Funding Agreement**

<b>Core Agreement (254)</b>	<b>FTE</b>	<b>Salaries</b>	<b>Benefits</b>	<b>Total</b>
City Clerk/Asst City Administrator	1.0	111,654	36,162	147,816
Stewardship Director	1.0	101,921	37,492	139,413
Econ Development Director	1.0	100,795	35,062	135,857
Community Development Director	1.0	106,843	25,971	132,814
Information Services Manager	1.0	99,248	36,753	136,001
Finance Director	1.0	105,751	23,783	129,534
Deputy Finance Director	1.0	84,779	28,677	113,456
Permit Technician Supervisor	1.0	77,413	21,169	98,582
Facilities Equipment Coordinator	1.0	68,019	23,142	91,161
Associate Planner	1.0	65,929	19,294	85,223
Public Works Director (Parks & Cemetery)*	0.1	10,482	3,779	14,261
<b>Subtotal Salary and Benefits</b>	<b>10.1</b>	<b>932,834</b>	<b>291,284</b>	<b>1,224,118</b>
Maintenance and Operations				180,000
<b>Total Staff and Building Costs</b>				<b>1,404,118</b>
Code Enforcement				35,000
<b>Subtotal Funding Agreement General Fund</b>		<b>932,834</b>	<b>291,284</b>	<b>1,439,118</b>
Legal For MPD				34,000
Other MPD Reimbursables				600,000
<b>Total MPD Funding</b>		-	-	<b>634,000</b>
<b>General Fund Funding Total Reimbursement</b>				<b>2,073,118</b>
*Utilities - Public Works Director	0.90	94,345	34,007	128,352
Utilities - Admin Assistant III Public Works	1.00	56,450	29,765	86,215
<b>Grand Total Funding Agreement</b>	<b>12.00</b>	<b>1,083,629</b>	<b>355,056</b>	<b>2,287,685</b>

\*PW Director assigned 10% to General Fund, 90% to Street and Utilities

**SPECIAL REVENUE FUND – Street**

<b>101 Street Fund</b>		<b>2010 Actual</b>	<b>2011 Amended Budget</b>	<b>2011 Act. thru August</b>	<b>2012 Final Budget</b>	<b>11 to 12 Budget Change</b>	<b>% Budget Change</b>
1	<b>REVENUE</b>						
2	Diverted County Road Prop Tax	5,349	6,200	6,200		(6,200)	-100%
3	Right of Way Permit	7,220	5,000	2,750	3,000	(2,000)	-40.0%
4	Street/Sidewalk/Curb Variance	300	400	300	300	(100)	-25.0%
5	Storm Clean UP Grant-Fed			100			
6	Street Gas Tax	90,571	91,500	57,330	85,870	(5,630)	-6.2%
7	LGIP Investment Interest	1,065	900	483	610	(290)	-32.2%
8	FA Reimbursement for PW Staff	20,075	41,338	28,422	42,946	1,608	3.9%
9	Street Miscellaneous			1,520			
10	<b>Subtotal Street Fund Revenue</b>	<b>124,580</b>	<b>145,338</b>	<b>97,105</b>	<b>132,726</b>	<b>(12,612)</b>	<b>-8.7%</b>
11	Beginning Cash & Investments	386,427	323,854	323,854	310,627	(13,227)	-4.1%
12	<b>Total Street Fund Sources</b>	<b>511,007</b>	<b>469,192</b>	<b>420,959</b>	<b>443,353</b>	<b>(25,839)</b>	<b>-5.5%</b>
13	<b>EXPENDITURES</b>						
14	Street-Wages	57,079	72,817	44,659	70,026	(2,791)	-3.8%
15	Furlough (2010-13 day, 11-5 day, 12-4 day)		(778)		(601)	177	-22.8%
16	Benefits (soc sec, retirement, medical ins, etc)	20,440	27,241	16,578	27,840	599	2.2%
17	<b>Subtotal Salaries and Benefits</b>	<b>77,519</b>	<b>99,280</b>	<b>61,237</b>	<b>97,265</b>	<b>(2,015)</b>	<b>-2.0%</b>
18	Roadside Maintenance Supplies	838	3,500	73		(3,500)	-100%
19	Allocated Office Supplies, Copies, Postage	2,251	1,773	1,184	1,719	(54)	-3.0%
20	Operating supplies and uniforms	454	800	449	800		0%
21	Street Signs	2,408	2,400			(2,400)	-100%
22	Sand & Salt-Snow & Ice	716	1,600	151	1,300	(300)	-18.8%
23	Fuel	1,600	1,900	1,284	2,000	100	5.3%
24	Small Tools & Equipment	867	1,200	56	1,200		0%
25	<b>Subtotal Operating Supplies</b>	<b>9,134</b>	<b>13,173</b>	<b>3,196</b>	<b>7,019</b>	<b>(6,154)</b>	<b>-46.7%</b>
26	Insurance	4,434	4,590		6,423	1,833	39.9%
27	Telephone, DSL and Postage	583	1,350	303	1,950	600	44.4%
28	Prof Services Transportation	5,730			1,000	1,000	100%
29	Traffic Signal Maintenance	3,408	4,000	1,458	3,500	(500)	-12.5%
30	Street Lighting	27,200	29,000	18,342	28,000	(1,000)	-3.4%
31	Street Striping	6,045	7,000			(7,000)	-100%
32	Travel, Memberships and Training	112	1,600	126	1,600		0%
33	Advertising		100	157	200	100	100%
34	Vehicle and Shop Maintenance	2,367	3,000	711	2,500	(500)	-16.7%
35	Utilities (elect,gas,water,waste,stormwtr etc)	1,805	1,860	1,351	1,946	86	4.6%
36	Other Professional Svcs and Miscellaneous	975		134	290	290	100%
37	Legal Costs	10,673	11,000	6,433	11,000		0%
38	State Auditor Services	305	2,500		440	(2,060)	-82.4%
39	PW Administration Cost Allocation	6,863	8,488	5,656	8,700	212	2.5%
40	<b>Subtotal Services and Charges</b>	<b>70,500</b>	<b>74,488</b>	<b>34,672</b>	<b>67,549</b>	<b>(6,939)</b>	<b>-9.3%</b>
41	<b>Total Operating Expenditures</b>	<b>157,153</b>	<b>186,941</b>	<b>99,105</b>	<b>171,833</b>	<b>(15,108)</b>	<b>-8.1%</b>
42	Transfer out to 510 Equipment Reserve	10,000	10,000		10,000		0%
43	Transfer to Street Preservation	20,000					
44	Transfer to 320 Fund Misc Overlay Match		11,239	11,239		(11,239)	-100%
45	Trans in from RR Project 004		(35,274)	(33,463)		35,274	-100%
46	<b>Subtotal Transfers</b>	<b>30,000</b>	<b>(14,035)</b>	<b>(22,224)</b>	<b>10,000</b>	<b>24,035</b>	<b>-171.3%</b>
47	Ending C & I (3 month Reserve)	39,288	46,735		42,960	(3,775)	-8.1%
48	Ending Cash & Investments Unreserved	284,566	249,551	344,078	218,560	(30,991)	-12.4%
49	<b>Subtotal Ending Cash and Investments</b>	<b>323,854</b>	<b>296,286</b>	<b>344,078</b>	<b>261,520</b>	<b>(34,766)</b>	<b>-11.7%</b>
50	<b>Total Street Fund Uses</b>	<b>511,007</b>	<b>469,192</b>	<b>420,959</b>	<b>443,353</b>	<b>(25,838)</b>	<b>-5.5%</b>

2011 Employee Allocations by Funding Source							
Street Funded Positions	Full Time Equivalent (FTE)	Funding Agreement	General Fund	Street Fund	Water Fund	Waste water Fund	Storm water Fund
Municipal Court							
Admin Assistant I	1.00		0.10		0.3	0.3	0.3
Deputy City Clerk	1.00		0.60	0.04	0.12	0.12	0.12
Senior Accountant	0.75		0.45	0.03	0.09	0.09	0.09
<b>Support Staff Total</b>	<b>2.75</b>		<b>1.15</b>	<b>0.07</b>	<b>0.51</b>	<b>0.51</b>	<b>0.51</b>
Public Works Director - Funding	1.00		0.10	0.15	0.25	0.25	0.25
Admin Assistant III- Funding	1.00			0.25	0.25	0.25	0.25
<b>Total Funding</b>		<b>2.00</b>	<b>-0.10</b>	<b>-0.4</b>	<b>-0.5</b>	<b>-0.5</b>	<b>-0.5</b>
Utilities Supervisor	1.00		0.10	0.15	0.25	0.25	0.25
Utility Worker	1.00		0.10	0.15	0.25	0.25	0.25
Utilities Operator	1.00		0.10	0.15	0.25	0.25	0.25
Seasonal Help for Parks	0.42		0.04	0.06	0.10	0.10	0.10
<b>Public Works Total</b>	<b>5.42</b>	<b>2.00</b>	<b>0.34</b>	<b>0.51</b>	<b>0.85</b>	<b>0.85</b>	<b>0.85</b>
<b>Total Budget Positions (FTE's)</b>	<b>8.17</b>	<b>2.00</b>	<b>1.49</b>	<b>0.58</b>	<b>1.36</b>	<b>1.36</b>	<b>1.36</b>



UTILITY FUNDS

<b>401 Water Fund</b>		<b>2010</b>	<b>2011</b>	<b>2011 Act</b>	<b>2012</b>	<b>11 to 12</b>	<b>% Budget</b>
		<b>Actual</b>	<b>Amended</b>	<b>thru</b>	<b>Final</b>	<b>Budget</b>	<b>Change</b>
			<b>Budget</b>	<b>August</b>	<b>Budget</b>	<b>Change</b>	
1	<b>REVENUE</b>						
2	Water User Charges	389,262	454,000	281,455	454,000		0%
3	Water Meter & Setting			3,929	4,000	4,000	100%
4	Reimbursible Water Repairs	528	600	86	100	(500)	-83.3%
5	Water Availability Staff Fee			600	600	600	100%
6	Water Late Fees/Name Change Charge	15,838	16,000	10,568	15,000	(1,000)	-6.3%
7	<b>Subtotal Water Operating Revenue</b>	<b>405,627</b>	<b>470,600</b>	<b>296,639</b>	<b>473,700</b>	<b>3,100</b>	<b>0.7%</b>
8	<b>Other Revenue</b>						
9	LGIP Investment Interest	350	500	194	260	(240)	-48.0%
10	FA Reimbursement for PW Staff	33,458	49,613	33,245	57,207	7,594	15.3%
11	Insurance Recoveries		26,585	26,585		(26,585)	-100%
12	<b>Subtotal Other Water Fund Revenue</b>	<b>33,807</b>	<b>76,698</b>	<b>60,024</b>	<b>57,467</b>	<b>(19,231)</b>	<b>-25.1%</b>
13	Transfer in Water Reserves for Debt	125,000	125,000	125,000	125,000		0%
14	<b>Subtotal Water Fund Revenue</b>	<b>564,435</b>	<b>672,298</b>	<b>481,662</b>	<b>656,167</b>	<b>(16,131)</b>	<b>-2.4%</b>
15	Beginning Cash & Investments	150,641	146,061	146,061	151,202	5,141	3.5%
16	<b>Total Water Fund Sources</b>	<b>715,075</b>	<b>818,359</b>	<b>627,723</b>	<b>807,369</b>	<b>(10,991)</b>	<b>-1.3%</b>
17	<b>EXPENDITURES</b>						
18	Water Wages	105,990	122,161	78,946	123,976	1,815	1.5%
19	Overtime				2,000	2,000	100%
20	Furlough (2011-5day, 2012-4 day)		(1,547)		(1,214)	333	-21.5%
21	Benefits (soc sec, retirement, medical ins, etc)	38,505	43,867	29,176	49,075	5,208	11.9%
22	<b>Subtotal Salaries and Benefits</b>	<b>144,495</b>	<b>164,481</b>	<b>108,122</b>	<b>173,837</b>	<b>7,356</b>	<b>4.5%</b>
23	Operating and Office Supplies & Uniforms	2,393	6,950	4,745	6,978	28	0.4%
24	Allocated office supplies, copies and postage	7,901	6,945	4,632	6,248	(697)	-10.0%
25	Caustic	9,850	15,000	7,467	15,000		0%
26	Fuel	3,279	3,200	2,139	3,250	50	1.6%
27	Small Tools and Safety Equipment	401	1,000	140	1,000		0%
28	<b>Subtotal Supplies</b>	<b>23,824</b>	<b>33,095</b>	<b>19,124</b>	<b>32,476</b>	<b>(619)</b>	<b>-1.9%</b>
29	Insurance	18,888	19,551		22,106	2,555	13.1%
30	Telephone, internet, radios & postage	5,186	5,000	2,768	4,500	(500)	-10.0%
31	Professional Svcs & Sensus software support	1,434	4,500	1,577	4,600	100	2.2%
32	Water Testing and Sampling	1,486	1,500	499	1,500		0%
33	Health department and other permits	2,758	1,700	1,608	2,700	1,000	0%
34	Repairs, maintenance and locates	3,455	5,500	4,313	6,700	1,200	21.8%
35	Travel, memberships and training	865	1,900		2,900	1,000	0%
36	Electricity and Gas	32,140	34,000	19,853	32,000	(2,000)	-5.9%
37	Other Utilities (water, wstwtr, waste disp, etc.)	956	1,060	675	1,048	(12)	-1.1%
38	Legal Services	15,970	16,500	9,649	16,500		0%
39	Printing, locates and miscellaneous	1,014	800	643	700	(100)	-12.5%
40	Audit - share of costs	764	6,250		1,100	(5,150)	-82.4%
41	PW Administration Cost Allocation	20,601	25,465	16,976	26,100	635	2.5%
42	Utility Tax	24,333	28,236	17,798	28,422	186	0.7%
43	B & O Taxes	19,087	22,832	14,003	23,822	990	4.3%
44	<b>Subtotal Services and Charges</b>	<b>148,935</b>	<b>174,794</b>	<b>90,362</b>	<b>174,698</b>	<b>(96)</b>	<b>-0.1%</b>
45	<b>Subtotal Operating Expenditures</b>	<b>317,254</b>	<b>372,370</b>	<b>217,608</b>	<b>381,011</b>	<b>8,641</b>	<b>2.3%</b>
46	Transfer out to 510 Equipment Reserve	10,000	10,000		10,000		0%
47	Wind damage electric pole replacement		27,585	27,585		(27,585)	-100%
48	Debt service for Water meters		48,300		48,200	(100)	-0.2%
49	PWTF Debt Service	934,420	926,153	925,069	922,075	(4,078)	-0.4%
50	Developer Payment of Debt Service	(692,660)	(686,446)	(684,433)	(683,505)	2,941	-0.4%
51	<b>Subtotal Other Expenditures</b>	<b>251,760</b>	<b>325,592</b>	<b>268,220</b>	<b>296,770</b>	<b>(28,822)</b>	<b>-8.9%</b>
52	Ending C & I (3 month expenditures)	79,286	93,042		92,753	(289)	-0.3%
53	Ending Cash & Investments Unreserved	66,775	27,355	141,894	36,835	9,480	34.7%
54	<b>Subtotal Ending Cash &amp; Investments</b>	<b>146,061</b>	<b>120,397</b>	<b>141,894</b>	<b>129,588</b>	<b>9,191</b>	<b>7.6%</b>
55	<b>Total Water Fund Uses</b>	<b>715,075</b>	<b>818,359</b>	<b>627,723</b>	<b>807,369</b>	<b>(10,990)</b>	<b>-1.3%</b>

# Black Diamond Final Budget | 2012

2012 Employee Allocations by Funding Source							
Water Funded Positions	Full Time Equivalent (FTE)	Funding Agreement	General Fund	Street Fund	Water Fund	Waste water Fund	Storm water Fund
Municipal Court							
Admin Assistant I	1.00		0.10		0.3	0.3	0.3
Deputy City Clerk	1.00		0.60	0.04	0.12	0.12	0.12
Senior Accountant	0.75		0.45	0.03	0.09	0.09	0.09
<b>Support Staff Total</b>	<b>2.75</b>		<b>1.15</b>	<b>0.07</b>	<b>0.51</b>	<b>0.51</b>	<b>0.51</b>
Public Works Director - Funding	1.00		0.10	0.15	0.25	0.25	0.25
Admin Assistant III- Funding	1.00			0.25	0.25	0.25	0.25
<b>Total Funding</b>		<b>2.00</b>	<b>-0.10</b>	<b>-0.4</b>	<b>-0.5</b>	<b>-0.5</b>	<b>-0.5</b>
Utilities Supervisor	1.00		0.10	0.15	0.25	0.25	0.25
Utility Worker	1.00		0.10	0.15	0.25	0.25	0.25
Utilities Operator	1.00		0.10	0.15	0.25	0.25	0.25
Seasonal Help for Parks	0.42		0.04	0.06	0.10	0.10	0.10
<b>Public Works Total</b>	<b>5.42</b>	<b>2.00</b>	<b>0.34</b>	<b>0.51</b>	<b>0.85</b>	<b>0.85</b>	<b>0.85</b>
<b>Total Budget Positions (FTEs)</b>	<b>8.17</b>	<b>2.00</b>	<b>1.49</b>	<b>0.53</b>	<b>1.36</b>	<b>1.36</b>	<b>1.36</b>

## Water Debt Analysis

Issue Date	Issue Amount	Type	Purpose	Maturity Date	12/31/2011 debt owed	2012			2012		Total Water	Developer Reimburse	Total Debt Service
						Principal	Interest	Debt Svs	Water Operating	Water Capt Res			
1995	200,000	PWTF	Wtr Repair	2015	41,600	10,650	2,130	12,780	13,846		13,846	0	13,846
2006	180,000	PWTF	Cor Contrl	2022	123,750	11,250	619	11,869	11,982		11,982	0	11,982
2005	3,407,063 2,040,757	PWTF	Tac 500mg Pump Fac, Res & lines	2024	3,841,341	295,500	19,207	314,707	88,932	125,000	213,932	100,775	314,707
2004	5,447,820			Tac Water	Tac Wtr 1	2013	1,125,460	562,730	20,000	582,730	0	0	0
<b>Totals</b>	<b>17,162,330</b>				<b>5,132,151</b>	<b>880,130</b>	<b>41,956</b>	<b>922,086</b>	<b>114,760</b>	<b>125,000</b>	<b>239,760</b>	<b>683,505</b>	<b>923,265</b>
<b>Total Net Water Fund 2012 Debt Service</b>									<b>\$114,760</b>	<b>\$125,000</b>	<b>\$239,760</b>		

\*Black Diamond holds a letter of credit from Palmer Coking for their balance owing of \$1,230,500 of PWTF loan. Thirteen payments of Approximately \$101,000.

\*\*Black Diamond holds a letter of credit from BD Partners for the \$1,125,460 balance owing to Tacoma Water. Two payments of principal & interest.



# Black Diamond Final Budget | 2012

<b>407 Wastewater Fund</b>		2010 Actual	2011 Amended Budget	2011 Act thru August	2012 Final Budget	1 to 12 Budget Change	% Budget Change
1	<b>REVENUE</b>						
2	<b>Operating Revenue</b>						
3	Wastewater User Charges	597,817	650,402	410,533	650,000	(402)	-0.1%
4	Wastewater Reimbursement Svcs.	1,200	1,000	1,410	1,500	500	50.0%
5	<b>Subtotal Wastewater Operating Revenue</b>	<b>599,017</b>	<b>651,402</b>	<b>411,943</b>	<b>651,500</b>	<b>98</b>	<b>0.02%</b>
6	<b>Other Revenue</b>						
7	LGIP Investment Interest	348	400	118	150	(250)	-62.5%
8	FA Reimbursement for PW Staff	33,458	49,612	33,245	57,207	7,595	15.3%
9	Miscellaneous Rev (recoveries, staff fees, etc)		7,204	922	600	(6,604)	-91.7%
10	<b>Subtotal Wastewater Other Revenue</b>	<b>33,806</b>	<b>57,216</b>	<b>34,285</b>	<b>57,957</b>	<b>741</b>	<b>1.3%</b>
11	Transfer from Wastewater Reserves	50,000			50,000	50,000	100%
12	<b>Subtotal Wastewater Fund Revenue</b>	<b>682,823</b>	<b>708,618</b>	<b>446,228</b>	<b>759,457</b>	<b>50,839</b>	<b>7.2%</b>
13	Beginning Cash & Investments	120,137	109,589	109,589	105,500	(4,089)	-3.7%
14	<b>Total Wastewater Fund Sources</b>	<b>802,960</b>	<b>818,207</b>	<b>555,817</b>	<b>864,957</b>	<b>46,750</b>	<b>5.7%</b>
15	<b>EXPENDITURES</b>						
16	Wastewater Wages	105,991	120,147	78,945	122,552	2,405	2.0%
17	Overtime				2,000	2,000	100%
18	Furlough (2011-5day, 2012-4 day)		(1,525)		(1,214)	311	-20.4%
19	Benefits (soc sec, retirement, medical ins, etc)	38,505	43,758	29,177	49,182	5,424	12.4%
20	<b>Subtotal Salaries and Benefits</b>	<b>144,495</b>	<b>162,380</b>	<b>108,122</b>	<b>172,520</b>	<b>8,140</b>	<b>5.0%</b>
21	Allocated Office Supplies, Copies, Postage	7,901	6,945	4,632	6,248	(697)	-10.0%
22	Office, Operating Supplies & Uniforms	1,445	2,200	775	1,478	(722)	-32.8%
23	Fuel	2,505	3,200	2,139	3,250	50	1.6%
24	Small tools and safety equipment	401	1,500	944	4,000	(500)	-33.3%
25	<b>Subtotal Operating Supplies</b>	<b>12,252</b>	<b>13,845</b>	<b>8,491</b>	<b>14,976</b>	<b>1,131</b>	<b>8.2%</b>
26	Insurance	10,309	10,672		10,626	(46)	-0.4%
27	Repairs and Maintenance	3,136	5,000	4,643	6,500	1,500	30.0%
28	Printing, advertising and security	483		255	500	500	100%
29	Travel and Training	12	1,200		2,375	1,175	97.9%
30	Electricity and Gas	1,871	2,100	1,237	1,854	(246)	-11.7%
31	Other Utilities	1,025	1,530	900	1,371	(159)	-10.4%
32	Telephone, internet and Postage	5,116	5,300	2,614	4,300	(1,000)	-18.9%
33	Legal and Professional Services	17,183	16,500	9,991	19,000	2,500	15.2%
34	Audit - share of costs	764	6,250		1,100	(5,150)	-82.4%
35	PW Administration Cost Allocation	20,601	25,465	16,976	26,100	635	2.5%
36	Utility Taxes	35,941	38,625	24,753	39,100	475	1.2%
37	State of WA Excise Tax	4,935	6,000	4,369	7,862	1,862	31.0%
38	<b>Subtotal Services and Charges</b>	<b>101,375</b>	<b>118,642</b>	<b>65,738</b>	<b>120,688</b>	<b>2,046</b>	<b>1.7%</b>
39	<b>Subtotal Operating Expenditures</b>	<b>258,122</b>	<b>294,867</b>	<b>182,350</b>	<b>308,184</b>	<b>13,317</b>	<b>4.5%</b>
40	Soos Creek Sewer Payment	27,472					
41	Metro Sewer Charges	387,776	438,396	297,969	448,000	9,604	2.2%
42	<b>Subtotal Sewer Treatment</b>	<b>415,249</b>	<b>438,396</b>	<b>297,969</b>	<b>448,000</b>	<b>9,604</b>	<b>2.2%</b>
43	<b>Subtotal Operating Expenditures</b>	<b>673,371</b>	<b>733,263</b>	<b>480,320</b>	<b>756,184</b>	<b>22,921</b>	<b>3.1%</b>
44	<b>Other Expenditures</b>						
45	Transfer out to S10 Equipment Reserve	10,000	10,000		10,000		0%
46	Transfer to Wastewater Capital	10,000					
47	<b>Subtotal Other Expenditures</b>	<b>20,000</b>	<b>10,000</b>		<b>10,000</b>		<b>0%</b>
48	Ending C & I (3 month expenditures)	62,555	71,981	75,497	73,484	1,504	2.1%
49	Ending Cash & Investments Unreserved	47,034	2,964		25,289	22,326	753.3%
50	<b>Subtotal Ending Cash &amp; Investments</b>	<b>109,589</b>	<b>74,944</b>	<b>75,497</b>	<b>98,773</b>	<b>23,829</b>	<b>31.8%</b>
51	<b>Total Wastewater Fund Uses</b>	<b>802,960</b>	<b>818,207</b>	<b>555,817</b>	<b>864,957</b>	<b>46,750</b>	<b>5.7%</b>

2012 Employee Allocations by Funding Source							
Wastewater Funded Positions	Full Time Equivalent (FTE)	Funding Agreement	General Fund	Street Fund	Water Fund	Waste water Fund	Storm water Fund
52 Municipal Court							
53 Admin Assistant I	1.00		0.10		0.3	0.3	0.3
54 Deputy City Clerk	1.00		0.60	0.04	0.12	0.12	0.12
55 Senior Accountant	0.75		0.45	0.03	0.09	0.09	0.09
56 Support Staff Total	2.75		1.15	0.07	0.51	0.51	0.51
57 Public Works Director - Funding	1.00		0.10	0.15	0.25	0.25	0.25
58 Admin Assistant III- Funding	1.00			0.25	0.25	0.25	0.25
59 Total Funding		2.00	-0.10	-0.4	-0.5	-0.5	-0.5
60 Utilities Supervisor	1.00		0.10	0.15	0.25	0.25	0.25
61 Utility Worker	1.00		0.10	0.15	0.25	0.25	0.25
62 Utilities Operator	1.00		0.10	0.15	0.25	0.25	0.25
63 Seasonal Help for Parks	0.42		0.04	0.06	0.10	0.10	0.10
64 Public Works Total	5.42	2.00	0.34	0.51	0.85	0.85	0.85
65 Total Budget Positions (FTEs)	8.17	2.00	1.49	0.58	1.36	1.36	1.36



Volunteers at work during Make a Difference Day 2011

# Black Diamond Final Budget | 2012

<b>410 Stormwater Fund</b>		<b>2010</b>	<b>2011</b>	<b>2011 Act</b>	<b>2012 Final</b>	<b>11 to 12</b>	<b>% Budget</b>
		<b>Actual</b>	<b>Amended</b>	<b>thru</b>	<b>Budget</b>	<b>Budget</b>	<b>Change</b>
			<b>Budget</b>	<b>August</b>		<b>Change</b>	<b>% Change</b>
<b>REVENUE</b>							
1	Stormwater Charges	237,318	268,800	182,163	270,000	1,200	0.4%
2	LGIP Investment Interest	220	350	67	200	(150)	-42.9%
3	FA Reimbursement for PW Staff	33,458	49,612	33,245	57,207	7,595	15.3%
4	<b>Subtotal Operating Revenue</b>	<b>270,995</b>	<b>318,762</b>	<b>215,475</b>	<b>327,407</b>	<b>8,645</b>	<b>2.7%</b>
5	Beginning Cash & Investments	90,872	44,523	44,523	62,934	18,411	41.4%
6	<b>Total Stormwater Fund Sources</b>	<b>361,867</b>	<b>363,285</b>	<b>259,998</b>	<b>390,340</b>	<b>27,055</b>	<b>7.4%</b>
<b>EXPENDITURES</b>							
7	Stormwater Wages	105,991	118,965	78,945	120,566	1,601	1.3%
8	Overtime				2,000	2,000	100%
9	Furlough (2011-5day, 2012-4 day)		(1,536)		(1,214)	322	-21.0%
10	Benefits (soc sec, retirement, medical ins, etc)	38,505	44,362	29,177	48,533	4,171	9.4%
11	<b>Subtotal Salaries and Benefits</b>	<b>144,495</b>	<b>161,791</b>	<b>108,122</b>	<b>169,885</b>	<b>8,094</b>	<b>5.0%</b>
12	Operating Supplies and Uniforms	1,450	1,560	458	1,380	(180)	-11.5%
13	Allocated Office Supplies, Copies, Postage	7,901	6,945	4,632	6,248	(697)	-10.0%
14	Fuel	2,505	3,200	2,139	3,200		0%
15	Small Tools and Safety Equipment	401	600	140	1,000	400	66.7%
16	<b>Subtotal Office and Operating Supplies</b>	<b>12,257</b>	<b>12,305</b>	<b>7,370</b>	<b>11,828</b>	<b>(477)</b>	<b>-3.9%</b>
17	Professional Services	1,812	2,000			(2,000)	-100%
18	KC Water Quality - Testing and Lab	6,305	6,500	7,945	7,000	500	7.7%
19	Dept of Ecology/Stormwater Permit	1,920	2,000	980	2,000		0%
20	Travel, memberships and training	12	1,300		2,400	1,100	84.6%
21	WRIA 9 Membership		3,735	3,787	3,800	65	1.7%
22	Tele, internet, radio, postage, adver & misc	4,042	3,500	3,135	6,300	2,800	80.0%
23	Utilities (gas, electric, water, sewer, etc.)	1,480	1,850	1,127	1,758	(92)	-5.0%
24	Legal Costs	10,673	16,500	9,263	16,500		0%
25	Audit - share of costs	458	3,750		600	(3,150)	-84.0%
26	Insurance	4,267	4,417		4,593	176	4.0%
27	Vehicle and other maintenance & repairs	1,897	1,800	1,204	1,800		0%
28	PW Administration Cost Allocation	20,601	25,456	16,976	26,100	644	2.5%
29	Utility Taxes	14,239	16,128	10,930	16,200	72	0.4%
30	B & O Taxes	7,634	4,300	2,369	4,860	560	13.0%
31	<b>Subtotal Services and Charges</b>	<b>75,341</b>	<b>93,236</b>	<b>57,716</b>	<b>93,911</b>	<b>675</b>	<b>0.7%</b>
32	<b>Total Operating Expenditures</b>	<b>232,093</b>	<b>267,332</b>	<b>173,208</b>	<b>275,624</b>	<b>8,292</b>	<b>3.1%</b>
33	Transfer out to 510 Equipment Reserve	10,000	10,000		10,000		0%
34	Trans. to 410 Project Fund - Future Improvements				8,000	8,000	100%
35	Transfer to RR Project	40,000					
36	Loan Payment to Wastewater	30,650	30,600		30,400	(200)	-0.7%
37	<b>Subtotal Other Expenditures</b>	<b>80,650</b>	<b>40,600</b>		<b>48,400</b>	<b>(14,681)</b>	<b>-36.2%</b>
38	<b>Subtotal Operating Expenditures</b>	<b>312,743</b>	<b>307,932</b>	<b>173,208</b>	<b>324,024</b>	<b>16,092</b>	<b>5.2%</b>
39	Ending Cash & Investments	45,888	55,353	86,790	66,316	10,963	19.8%
40	<b>Total Stormwater Fund Uses (non-capital)</b>	<b>358,631</b>	<b>363,285</b>	<b>259,998</b>	<b>390,340</b>	<b>27,055</b>	<b>7.4%</b>

**2012 Employee Allocations by Funding Source**

Stormwater Funded Positions	Full Time Equivalent (FTE)	Funding Agreement	General Fund	Street Fund	Water Fund	Waste water Fund	Storm water Fund
<b>Municipal Court</b>							
Admin Assistant I	1.00		0.10		0.3	0.3	0.3
Deputy City Clerk	1.00		0.60	0.04	0.12	0.12	0.12
Senior Accountant	0.75		0.45	0.03	0.09	0.09	0.09
<b>Support Staff Total</b>	<b>2.75</b>		<b>1.15</b>	<b>0.07</b>	<b>0.51</b>	<b>0.51</b>	<b>0.51</b>
Public Works Director - Funding	1.00		0.10	0.15	0.25	0.25	0.25
Admin Assistant III- Funding	1.00			0.25	0.25	0.25	0.25
<b>Total Funding</b>		<b>2.00</b>	<b>-0.10</b>	<b>-0.4</b>	<b>-0.5</b>	<b>-0.5</b>	<b>-0.5</b>
Utilities Supervisor	1.00		0.10	0.15	0.25	0.25	0.25
Utility Worker	1.00		0.10	0.15	0.25	0.25	0.25
Utilities Operator	1.00		0.10	0.15	0.25	0.25	0.25
Seasonal Help for Parks	0.42		0.04	0.06	0.10	0.10	0.10
<b>Public Works Total</b>	<b>5.42</b>	<b>2.00</b>	<b>0.34</b>	<b>0.51</b>	<b>0.85</b>	<b>0.85</b>	<b>0.85</b>
<b>Total Budget Positions (FTEs)</b>	<b>8.17</b>	<b>2.00</b>	<b>1.49</b>	<b>0.58</b>	<b>1.36</b>	<b>1.36</b>	<b>1.36</b>

<b>104 REET I Gen Gov't Fund</b>		2010 Actual	2011 Amended Budget	2011 Ac thru August	2012 Final Budget	11 to 12 Budget Change	% Budget Change
<b>REVENUE</b>							
1	REVENUE						
2	R1 1.4% REET	45,476	30,000	21,072	38,500	8,500	28.3%
3	LGIP Investment Interest	2,202	1,600	1,004	1,200	(400)	-25.0%
4	Transfer in from REET II		70,000		93,500	23,500	33.6%
5	<b>Subtotal Revenue</b>	<b>47,678</b>	<b>101,600</b>	<b>22,076</b>	<b>133,200</b>	<b>31,600</b>	<b>31.1%</b>
6	Beginning Cash & Investments	710,483	401,486	401,486	321,026	(80,460)	-20.0%
7	<b>Total REET I 104 Fund Sources</b>	<b>758,161</b>	<b>503,086</b>	<b>423,562</b>	<b>454,226</b>	<b>(48,860)</b>	<b>-9.7%</b>
<b>EXPENDITURES</b>							
8	EXPENDITURES						
9	Transfer to 310 Gen Gov't Capital Fund	356,675	139,000	30,000	98,750	(40,250)	-29.0%
10	Trans 510 Fund - Police & Fire Equipment		43,850		79,915	36,065	82.2%
11	<b>Subtotal Expenditures</b>	<b>356,675</b>	<b>182,850</b>	<b>30,000</b>	<b>178,665</b>	<b>(4,185)</b>	<b>-2.3%</b>
12	Ending Cash & Investments	401,486	320,236	393,562	275,561	(44,675)	-14.0%
13	<b>Total REET I Fund Uses</b>	<b>758,161</b>	<b>503,086</b>	<b>423,562</b>	<b>454,226</b>	<b>(48,860)</b>	<b>-9.7%</b>

<b>310 Government Capital Fund</b>		2010 Actual	2011 Amended Budget	2011 Act thru August	2012 Final Budget	11 to 12 Budget Change	% Budget Change
<b>REVENUE</b>							
1	REVENUE						
2	Transfer in REET I	356,675	139,000	30,000	98,750	(40,250)	-29.0%
3	King Co Parks Tax Levy	8,323	8,000	4,461	8,000		0%
4	Tree Mitigation	6,000		650	5,000	5,000	100%
5	Boat Launch Grant KC Conservation District	2,556		2,872			
6	King Co Regional Park Grant				20,000	20,000	100%
7	DOE Grant for Shoreline MP	39,521	20,285	4,385	10,000	(10,285)	-50.7%
8	State Grants for Ginder purchase				175,000	175,000	100%
9	Dept of Ecology Grant for Ginder purchase				125,000	125,000	100%
10	Impact fees, in-kind or developer		7,500		16,250	8,750	116.7%
11	Transfer In REET II - Impact Study Fees		80,000	80,000		(80,000)	-100%
12	<b>Subtotal Revenue</b>	<b>413,075</b>	<b>254,785</b>	<b>122,368</b>	<b>458,000</b>	<b>203,215</b>	<b>79.8%</b>
13	Beginning Cash & Investments	86,178	310,163	310,164		(310,163)	-100%
14	<b>Total 310 Govt Capital Fund Sources</b>	<b>499,253</b>	<b>564,948</b>	<b>432,532</b>	<b>458,000</b>	<b>(106,948)</b>	<b>-18.9%</b>
<b>EXPENDITURES</b>							
15	EXPENDITURES						
16	Ginder Land acquisition				300,000	300,000	100%
17	Trails Projects	1,665	24,094		28,000	3,906	16.2%
18	Boat Launch Project	8,312	49,244	23,295		(49,244)	-100%
19	Shoreline Master Plan	26,804	20,479	7,445	10,000	(10,479)	-51.2%
20	Park Signage	865	16,635	121		(16,635)	-100%
21	Tree Mitigation	1,058	4,941	894	5,000	59	1.2%
22	Prior year park projects	27,690					
23	Council Chambers, Police & Court Building	11,124	132,590	97,155		(132,590)	-100%
24	Police Technology & other	15,876	13,261	4,177	8,000	(5,261)	-39.7%
25	Police record system loan payment - principal	40,000	40,000		40,000		0%
26	Police record system loan - interest	800	2,000		2,000		0%
27	Police records, phones & firearms	18,668					
28	Fire Impact Fees & CF Henderson/Young		14,620	12,105		(14,620)	-100%
29	Fire Station 99 study & design		5,000		35,000	30,000	600%
30	General Government technology	21,844	34,155	8,828	20,000	(14,155)	-41.4%
31	Grant Matching	14,384	103,549	769	10,000	(93,549)	-90.3%
32	Future Facility Site design & analysis		15,000			(15,000)	-100.0%
33	Impact Study fees		65,380			(65,380)	-100%
34	Way Finding Signs		24,000			(24,000)	-100%
35	<b>Subtotal General Govt Capital Projects</b>	<b>189,088</b>	<b>564,948</b>	<b>154,788</b>	<b>458,000</b>	<b>(106,948)</b>	<b>-18.9%</b>
36	Ending Cash & Investments	310,164		277,744			
37	<b>Total 310 Gen Govt Capital Fund Uses</b>	<b>499,252</b>	<b>564,948</b>	<b>432,532</b>	<b>458,000</b>	<b>(106,948)</b>	<b>-18.9%</b>
38	* Note that fire and police vehicles and equipment are funded out of the 510 Fund						

<b>105 REET II Public Works Capital Projects</b>		<b>2010 Actual</b>	<b>2011 Amended Budget</b>	<b>2011 Act thru August</b>	<b>2012 Final Budget</b>	<b>11 to 12 Budget Change</b>	<b>% Budget Change</b>
<b>REVENUE</b>							
R2 1/4% REET Tax		45,476	30,000	21,072	38,500	8,500	28.3%
LGIP Investment Interest		2,562	3,500	1,098	2,000	(1,500)	-42.9%
<b>Subtotal REET II Fund Revenue</b>		<b>48,037</b>	<b>33,500</b>	<b>22,170</b>	<b>40,500</b>	<b>7,000</b>	<b>20.9%</b>
Beg Cash & Investments		819,237	543,991	543,991	530,125	(13,866)	-2.5%
<b>Total REET II Fund Sources</b>		<b>867,274</b>	<b>577,491</b>	<b>566,161</b>	<b>570,625</b>	<b>(6,866)</b>	<b>-1.2%</b>
<b>EXPENDITURES</b>							
Transfer to REET I			70,000		93,500	23,500	33.6%
Transfer out 320 PW Capital		323,283	120,000		148,782	28,782	24.0%
Transfer to 320 Fund - Misc Overlays - Match			32,000		(32,000)		-100%
Trans Back from RR Project			(153,547)	(145,670)		153,547	-100%
<b>Total REET II Fund Expenditures</b>		<b>323,283</b>	<b>68,453</b>	<b>(145,670)</b>	<b>242,282</b>	<b>173,829</b>	<b>253.9%</b>
Ending Cash & Investments		543,991	509,038	711,831	328,343	(180,695)	-35.5%
<b>Total REET II Fund Uses</b>		<b>867,274</b>	<b>577,491</b>	<b>566,161</b>	<b>570,625</b>	<b>(6,866)</b>	<b>-1.2%</b>

<b>320 REET II Public Works Capital Projects</b>		<b>2010 Actual</b>	<b>2011 Amended Budget</b>	<b>2011 Act thru August</b>	<b>2012 Final Budget</b>	<b>11 to 12 Budget Change</b>	<b>% Budget Change</b>
<b>REVENUE</b>							
Transfers Street Fund		20,000	(22,224)	(22,224)		22,224	-100%
Transfers REET II		323,283	6,330	(145,670)	168,782	162,452	2566.4%
TIB Grants		908,362	476,132	39,714	100,000	(376,132)	-79.0%
CDBG Grant		62,839	300,762	212,520		(300,762)	-100%
Transfers to and from Utilities		40,000	(17,715)	(17,715)		17,715	-100%
Grant Matching and Reimbursements				79,007	20,000	20,000	100%
<b>Subtotal PW Capital Fund Revenue</b>		<b>1,354,484</b>	<b>743,285</b>	<b>145,632</b>	<b>288,782</b>	<b>(454,503)</b>	<b>-61.1%</b>
Beginning Cash & Investments		149,741	124,722	41,340		(124,722)	-100%
<b>Total PW Capital Fund Sources</b>		<b>1,504,225</b>	<b>868,007</b>	<b>186,972</b>	<b>288,782</b>	<b>(579,225)</b>	<b>-66.7%</b>
<b>EXPENDITURES</b>							
288th Paving-Watson Asphalt			112,388	1,226	120,000	7,612	6.8%
Roberts Sidewalk/ Morgan St to KC Library			319,218		38,782	(280,436)	-87.9%
Railroad Avenue Project		947,265	10,647	10,647		(10,647)	-100%
Morgan Street Project		395,725	155,509	90,839		(155,509)	-100%
Rock Crk Bridge prelim engr (grant matching)					20,000	20,000	100%
Public Works Facilities Design and Engineering					20,000	20,000	100%
Elevate Abrahms preliminary engineering					20,000	20,000	100%
General Street Preservation		1,729	45,245	3,901	30,000	(15,245)	-33.7%
Lawson and Newcastle repair			105,000	360		(105,000)	-100%
233rd Ave Street Repair		34,783					
Transfer to 310 Fund for Projects			80,000	80,000		(80,000)	-100%
Grant Matching - Streets			40,000		40,000		0%
<b>Subtotal PW Capital Fund Projects</b>		<b>1,379,503</b>	<b>868,007</b>	<b>186,972</b>	<b>288,782</b>	<b>(579,225)</b>	<b>-66.7%</b>
Ending Cash & Investments Unreserved		124,722					
<b>Total PW Capital Fund Uses</b>		<b>1,504,225</b>	<b>868,007</b>	<b>186,972</b>	<b>288,782</b>	<b>(579,225)</b>	<b>-66.7%</b>

<b>402 WSFFA Fund*</b>		<b>2010 Actual</b>	<b>2011 Amended Budget</b>	<b>2011 Act thru August</b>	<b>2012 Final Budget</b>	<b>11 to 12 Budget Change</b>	<b>% Budget Change</b>
<b>*Water Supply Facility Funding Agreement</b>							
<b>REVENUE</b>							
1	Springs/Task 3				300,000	300,000	100%
2	Springs/Task 3 - Palmer CC			4,343			
3	Developer Contributions		140,000			(140,000)	-100%
4	Transfer to correct prior year error	53,678					
5	LGIP Investment Interest	43		29			
6	<b>Subtotal WSFFA Revenue</b>	<b>53,721</b>	<b>140,000</b>	<b>4,371</b>	<b>300,000</b>	<b>160,000</b>	<b>114.3%</b>
7	Beg Cash & Investments	14,352	28,881	28,881	122,800	93,919	325.2%
8	<b>Total WSFFA Fund Sources</b>	<b>68,073</b>	<b>168,881</b>	<b>33,253</b>	<b>422,800</b>	<b>253,919</b>	<b>150.4%</b>
<b>EXPENDITURES</b>							
9	Reservoir Construction-Tacoma Water	39,191					
10	Springs/Task 3- Engineering		140,000		300,000	160,000	114.3%
11	<b>Total WSFFA Expenditures</b>	<b>39,191</b>	<b>140,000</b>		<b>300,000</b>	<b>160,000</b>	<b>114.3%</b>
12	Ending Cash & Investments Unreserved	28,881	28,881	33,253	122,800	93,919	325.2%
13	<b>Total WSFFA Fund Uses</b>	<b>68,073</b>	<b>168,881</b>	<b>33,253</b>	<b>422,800</b>	<b>253,919</b>	<b>150.4%</b>

<b>404 Water Capital Fund</b>		<b>2010 Actual</b>	<b>2011 Amended Budget</b>	<b>2011 Act thru August</b>	<b>2012 Final Budget</b>	<b>11 to 12 Budget Change</b>	<b>% Budget Change</b>
<b>REVENUE</b>							
1	LGIP Investment Interest	1,458	1,000	746	1,000		0%
2	Water Connection Charges		20,000	23,906	20,000		0%
3	CDBG Grant 5th Ave Water Main				175,000	175,000	100%
4	Loan from Wastewater Reserve for meters	230,000					
5	<b>Subtotal Water Capital Fund Revenue</b>	<b>231,458</b>	<b>21,000</b>	<b>24,652</b>	<b>196,000</b>	<b>175,000</b>	<b>833.3%</b>
6	Beg Cash & Investment Unreserved	629,009	780,436	580,436	486,240	(294,196)	-37.7%
7	<b>Total Water Capital Fund Sources</b>	<b>860,467</b>	<b>801,436</b>	<b>605,087</b>	<b>682,240</b>	<b>(119,196)</b>	<b>-14.9%</b>
<b>EXPENDITURES</b>							
8	5th Ave Water Main Replacement				175,000	175,000	100%
9	Meter Replacement Project	101,353	100,000	57,634		(100,000)	-100%
10	Trans back from Railroad Project		(6,225)	(5,905)		6,225	-100%
11	Transfer out to Water Fund 401-for debt	125,000	125,000	125,000	125,000		0%
12	Professional Services - Water				5,000	5,000	100%
13	Previous year WSFFA Transfer	53,678					
14	<b>Subtotal Water Capital Fund Expenditures</b>	<b>280,031</b>	<b>218,775</b>	<b>176,729</b>	<b>305,000</b>	<b>86,225</b>	<b>39.4%</b>
15	Ending Cash & Investments	580,436	582,661	428,358	377,240	(205,421)	-35.3%
16	<b>Total Water Capital Fund Uses</b>	<b>860,467</b>	<b>801,436</b>	<b>605,087</b>	<b>682,240</b>	<b>(119,196)</b>	<b>-14.9%</b>

<b>408 Wastewater Capital Fund</b>		<b>2010 Actual</b>	<b>2011 Amended Budget</b>	<b>2011 Act. thru August</b>	<b>2012 Final Budget</b>	<b>11 to 12 Budget Change</b>	<b>% Budget Change</b>
1	<b>REVENUE</b>						
2	Connection/Hook up Fees		5,000	6,400	6,400		0%
3	Loan Repay - Stormwater	30,650	30,400		30,400		0%
4	Loan Repay - Technology	40,800	42,000		42,000		0%
5	Loan Repay - Water Meters		46,200		46,200		0%
6	Loan repay, Interfund		2,100		2,100		0%
7	LGIP Investment Interest	2,747	2,750	1,096	1,600	(1,150)	-41.8%
8	Trans in from Wastewater	10,000					0%
9	Wastewater Storage Project		12,000			(12,000)	-100%
10	<b>Subtotal Wastewater Capital Revenue</b>	<b>84,197</b>	<b>140,450</b>	<b>7,496</b>	<b>128,700</b>	<b>(11,750)</b>	<b>-8.4%</b>
11	Beginning Cash & Investments	985,649	731,007	730,308	723,545	(7,462)	-1.0%
12	<b>Total Wastewater Capital Sources</b>	<b>1,069,846</b>	<b>871,457</b>	<b>737,804</b>	<b>852,245</b>	<b>(19,212)</b>	<b>-2.2%</b>
13	<b>EXPENDITURES</b>						
14	Infil and Inflow Construction				30,000	30,000	100%
15	Infiltration & Inflow Carryover		180,000	1,838		(180,000)	-100%
16	Lawson Lift Station Engineering		50,000			(50,000)	-100%
17	Preserve Wastewater Treatment Plant	5,544	24,456			(24,456)	-100%
18	Sewer Comprehensive Plan	53,995	11,006	5,766		(11,006)	-100%
19	Wastewater Storage Project/RH2 Engineering		12,000			(12,000)	-100%
20	Morganville Wastewater Lift Station				80,000	80,000	100%
21	Transfer out Sewer Operating	50,000			50,000	50,000	100%
22	Loan to Water Capital/Water Meter Project	230,000					
23	<b>Subtotal Wastewater Capital Expenditures</b>	<b>339,539</b>	<b>277,462</b>	<b>7,604</b>	<b>160,000</b>	<b>(117,462)</b>	<b>-42.3%</b>
24	Ending Cash & Investments	730,308	593,995	730,199	692,245	98,250	16.5%
25	<b>Total Wastewater Capital Fund Uses</b>	<b>1,069,846</b>	<b>871,457</b>	<b>737,804</b>	<b>852,245</b>	<b>(19,212)</b>	<b>-2.2%</b>

<b>410 Stormwater Capital Fund</b>		<b>2010 Actual</b>	<b>2011 Amended Budget</b>	<b>2011 Act. thru August</b>	<b>2012 Final Budget</b>	<b>11 to 12 Budget Change</b>	<b>% Budget Change</b>
1	<b>REVENUE</b>						
2	Department of Ecology Grant #1	22,047	24,717	24,717		(24,717)	-100%
3	Department of Ecology Grant #2		81,000		70,000	(11,000)	-13.6%
4	Alternate Site Study Reimburse		24,886			(24,886)	-100%
5	Transfer in from Stormwater Operating				8,000		
6	<b>Total Stormwater Capital Revenue</b>	<b>22,047</b>	<b>130,603</b>	<b>24,717</b>	<b>78,000</b>	<b>(52,603)</b>	<b>-40.3%</b>
7	Beginning Cash & Investments						
8	<b>Total Stormwater Capital Sources</b>	<b>22,047</b>	<b>130,603</b>	<b>24,717</b>	<b>78,000</b>	<b>(52,603)</b>	<b>-40.3%</b>
9	<b>EXPENDITURES</b>						
10	Stormwater Management Program	15,975					
11	Catch Basin Cleaning	9,310					
12	Dept of Ecology Grant #1		14,481	18,910		(14,481)	-100%
13	Dept of Ecology Grant #1 GPS		7,000	5,807		(7,000)	-100%
14	Dept of Ecology Grant #2		81,000		70,000	(11,000)	-13.6%
15	Future Use Projects				8,000	8,000	100%
16	Alternate Site Study		24,886			(24,886)	-100%
17	<b>Total Stormwater Capital Expenditures</b>	<b>25,285</b>	<b>127,367</b>	<b>24,717</b>	<b>78,000</b>	<b>(49,367)</b>	<b>-38.8%</b>
18	Ending Cash & Investments		3,236			(3,236)	-100%
19	<b>Total Stormwater Capital Uses</b>	<b>25,285</b>	<b>130,603</b>	<b>24,717</b>	<b>78,000</b>	<b>(52,603)</b>	<b>-40.3%</b>

**EQUIPMENT RESERVES – (Internal Service Fund)**

<b>510 -1 Fire Equipment Reserves</b>						
	2010 Actual	2011 Amended Budget	2011 Act thru August	2012 Final Budget	11 to 12 Budget Change	% Budget Change
<b>REVENUE</b>						
1 LGIP Investment Interest Fire Equipment	173	100	64	100		0%
2 Transfer in REET I				34,915	34,915	100%
4 Fire Fee - Eagle Creek Plat		8,000	8,000		(8,000)	-100%
5 <b>Subtotal Revenue</b>	<b>173</b>	<b>8,100</b>	<b>8,064</b>	<b>35,015</b>		<b>0%</b>
6 Beg Cash & Invest Unreserved - Fire Equip	58,510	56,682	56,682	34,661	(22,021)	-38.9%
7 <b>Total Fire Equipment Revenue</b>	<b>58,682</b>	<b>64,782</b>	<b>64,746</b>	<b>69,676</b>	<b>4,894</b>	<b>7.6%</b>
<b>EXPENDITURES</b>						
9 Fire Truck Repairs & Maintenance		21,627	21,625		(21,627)	-100%
10 Two Fire Support Vehicles				69,500	69,500	100%
11 <b>Subtotal Fire Expenditures</b>		<b>21,627</b>	<b>21,625</b>	<b>69,500</b>	<b>47,873</b>	<b>221.4%</b>
12 Ending Cash & Investments - Fire	58,682	43,155	43,121	176	(42,979)	-99.6%
13 <b>Subtotal 510 Fire Equipment Uses</b>	<b>58,682</b>	<b>64,782</b>	<b>64,746</b>	<b>69,676</b>	<b>4,894</b>	<b>7.6%</b>

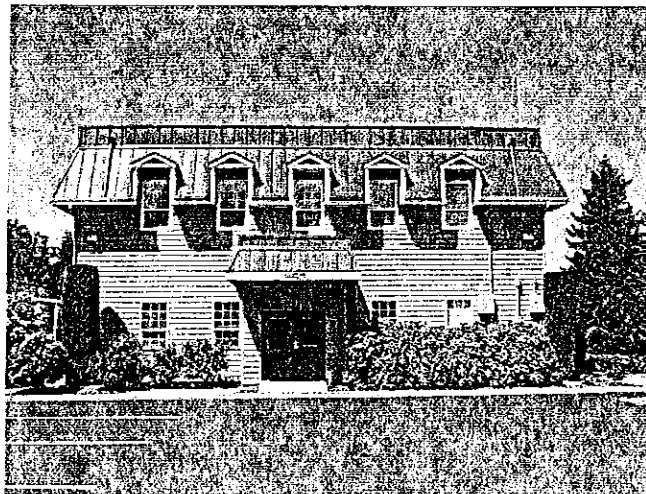
<b>510 -2 PW Equipment Reserves</b>						
	2010 Actual	2011 Amended Budget	2011 Act thru August	2012 Final Budget	11 to 12 Budget Change	% Budget Change
<b>REVENUE</b>						
15 LGIP Investment Interest City Equipment	424	525	203	300	(225)	-42.9%
16 <b>Subtotal Interest &amp; Other Revenue</b>	<b>424</b>	<b>525</b>	<b>203</b>	<b>300</b>	<b>(225)</b>	<b>-42.9%</b>
17 Transfer in from Water Fund	10,000	10,000		10,000		0%
18 Transfer in from Wastewater Fund	10,000	10,000		10,000		0%
19 Transfer in from Stormwater Fund	10,000	10,000		10,000		0%
20 Transfer in from Street Fund	10,000	10,000		10,000		0%
21 <b>Subtotal 510 Fund Transfers</b>	<b>40,000</b>	<b>40,000</b>		<b>40,000</b>		
22 <b>Subtotal 510 Fund Revenue</b>	<b>40,424</b>	<b>40,525</b>	<b>203</b>	<b>40,300</b>	<b>(225)</b>	<b>-0.6%</b>
23 Beg Cash & Invest Unreserved - City Equip	163,675	179,394		114,694	(64,700)	-36.1%
24 <b>Total 510 Fire Equip. Fund Sources</b>	<b>204,099</b>	<b>219,919</b>	<b>203</b>	<b>154,994</b>	<b>(64,925)</b>	<b>-29.5%</b>
<b>EXPENDITURES</b>						
26 Utility Truck Purchase		25,000			(25,000)	-100%
27 Slope Mower		75,000	74,934		(75,000)	-100%
28 Radios for Utilities		5,000			(5,000)	-100%
29 Dump Truck 2010 Purchase	24,705					
30 GPS System		9,192	10,118		(9,192)	-100%
31 <b>Subtotal City Equipment Expenditures</b>	<b>24,705</b>	<b>114,192</b>	<b>85,052</b>		<b>(114,192)</b>	<b>-100.0%</b>
32 Ending Cash & Investments - City	179,394	105,727	94,546	154,994	49,267	46.6%
33 <b>Total 510 City Equip. Fund Sources</b>	<b>204,099</b>	<b>219,919</b>	<b>179,598</b>	<b>154,994</b>	<b>(64,925)</b>	<b>-29.5%</b>

<b>510 -3 Police Vehicle Reserve</b>						
	2010 Actual	2011 Amended Budget	2011 Act thru August	2012 Final Budget	11 to 12 Budget Change	% Budget Change
<b>REVENUE</b>						
35 Transfer in REET I		43,850		45,000		100%
36 <b>Subtotal Police Vehicle Revenue</b>		<b>43,850</b>		<b>45,000</b>		<b>100%</b>
37 Beginning Cash & Investments						
38 <b>Total Police Equipment Revenue</b>		<b>43,850</b>		<b>45,000</b>	<b>1,150</b>	<b>100%</b>
<b>EXPENDITURES</b>						
40 Police Vehicles (Tahoe in 2011)		43,850	43,851	45,000	1,150	2.6%
41 <b>Total Police Vehicle Expenditures</b>		<b>43,850</b>	<b>43,851</b>	<b>45,000</b>	<b>1,150</b>	<b>2.6%</b>



# Black Diamond Final Budget | 2012

<b>510 - TOTAL Equipment Reserves</b>		<b>2010</b>	<b>2011</b>	<b>2011 Ac</b>	<b>2012 Final</b>	<b>11 to 12</b>	<b>% Budget</b>
		<b>Actual</b>	<b>Amended</b>	<b>thin</b>	<b>Budget</b>	<b>Budget</b>	<b>Change</b>
			<b>Budget</b>	<b>Augus</b>		<b>Change</b>	
42	<b>REVENUE</b>						
43	LGIP Investment Interest Equipment	596	625	268	400	(225)	-36%
44	Other Revenue		8,000	8,000		(8,000)	-100%
45	Transfers in	40,000	83,850		119,915	36,065	43.0%
46	<b>Subtotal Revenue</b>	<b>40,596</b>	<b>92,475</b>	<b>8,268</b>	<b>120,315</b>	<b>27,840</b>	<b>30.1%</b>
47	Beginning Cash & Investments	222,185	236,076	179,394	149,355	(86,721)	-36.7%
48	<b>Total 510 Equip. Fund Sources</b>	<b>262,781</b>	<b>328,551</b>	<b>187,662</b>	<b>269,670</b>	<b>(58,881)</b>	<b>-17.9%</b>
49	<b>EXPENDITURES</b>						
50	Total Expenditures	24,705	179,669	150,528	114,500	(65,169)	-36.3%
51	<b>Subtotal Equipment Expenditures</b>	<b>24,705</b>	<b>179,669</b>	<b>150,528</b>	<b>114,500</b>	<b>(65,169)</b>	<b>-36.3%</b>
52	Ending Cash & Investments - City	238,076	148,882	37,134	155,170	6,288	4.2%
53	<b>Total 510 Equip. Fund Sources</b>	<b>262,781</b>	<b>328,551</b>	<b>187,662</b>	<b>269,670</b>	<b>(58,881)</b>	<b>-17.9%</b>



Black Diamond City Hall is located at 24301 Roberts Drive  
(360) 886-2560

Website  
[www.ci.blackdiamond.wa.us](http://www.ci.blackdiamond.wa.us)

## Salary Schedule

2012 Salary Schedule	Level 1	Level 2	Level 3	Level 4	5 & On
City Administrator	9,161	9,459	9,913	10,271	10,634
Assistant City Administrator	7,875	8,269	8,663	9,056	9,450
Court Administrator	5,775	6,038	6,300	6,563	6,825
Interim Court Administrator	5,200				
Court Clerk (50% hourly)	18.17	19.69	21.20	22.72	24.23
Economic Development Ex Director	7,350	7,744	8,138	8,531	8,925
Stewardship Director	7,350	7,744	8,138	8,531	8,925
City Attorney	8,000	8,400	8,820	9,261	9,724
City Clerk	7,350	7,744	8,138	8,531	8,925
Deputy City Clerk	4,410	4,719	5,027	5,336	5,644
Finance Director	7,350	7,744	8,138	8,531	8,925
Deputy Finance Director	6,500	6,875	7,250	7,625	8,000
Utility Clerk	3,150	3,413	3,675	3,938	4,200
Senior Accountant 75% (hourly)	25.28	26.55	27.87	29.27	30.73
Accountant 1 Journey (hourly)	16.28	17.09	17.94	18.84	19.78
Administrative Assistant 2	3,150	3,413	3,675	3,938	4,200
Administrative Assistant 1	2,310	2,494	2,678	2,861	3,045
Information Services Manager	6,825	7,219	7,613	8,006	8,400
Police Chief	10,034	10,376	10,350	11,065	11,462
Police Commander	8,096	8,365	8,636	8,905	9,217
Police Sergeant	7,816	8,254			
Police Officer	4,748	5,321	5,896	6,469	7,013
Police Records Coordinator	4,410	4,719	5,027	5,336	5,644
Police Clerk 62.5% (hourly)	14.75	16.18	17.61	18.61	20.45
Facilities Equipment Coordinator	4,410	4,719	5,027	5,336	5,644
Human Resources Director	7,350	7,744	8,138	8,531	8,925
Community Development Ex Director	7,350	7,744	8,138	8,531	8,925
Permit Technician Supervisor	5,775	6,038	6,300	6,563	6,825
Permit Technician	4,410	4,719	5,027	5,336	5,644
Compliance Officer	4,410	4,719	5,027	5,336	5,644
Senior Planner	5,249	5,511	5,787	6,076	6,380
Planner	4,410	4,719	5,027	5,336	5,644
Associate Planner	4,394	4,614	4,845	5,087	5,341
Assistant Planner	4,099	4,304	4,519	4,745	4,982
Building Official	6,825	7,219	7,613	8,006	8,400
Parks Department Director	7,350	7,744	8,138	8,531	8,925
Public Works Director	7,350	7,744	8,138	8,531	8,925
Utilities Supervisor	6,825	7,219	7,613	8,006	8,400
Public Utilities Operator	4,620	4,700	4,792	4,884	4,976
Public Works Administrative Asst 3	4,166	4,375	4,594	4,823	5,065
Utility Worker	3,257	3,572	3,887	4,202	4,538
Utility Worker Seasonal (hourly)	12.98				

City of Black Diamond 2012 Budget Calendar

INTERNAL DATE	STATE LAW LIMITATIONS	BUDGET PREPARATION STEPS
July 25	None	Finance formulates message to accompany department budget requests
August 2	September 12	Departmental budget requests distributed
August 2	None	Salary and Benefits projections for 2012
August 19	September 26	Department request estimates to be filed with Finance
August 27	October 3	Revenue projection for all funds; estimate of General Fund ending balance for December 31, 2011
Sept 29	None	Finance provides expenditure budgets for October 2 Council packet
Sept 29	October 3	Finance submits to CAO the proposed preliminary budget setting forth the complete financial program
Sept 29 <b>(Workstudy)</b> October 12	October 3	CAO provides Council with current info on revenue from all sources as adopted in 2011 budget, and provides them with the proposed preliminary budget setting forth the proposed General Fund revenue
October 12 <b>(Workstudy)</b>	None	Mayor, Finance and Department heads review General Fund expenditures budgets with Council
October 27 <b>(Workstudy)</b>	None	Council reviews Public Works budgets for revenues and expenditures for all Public Works budgets, including street, water, wastewater, stormwater and all associated funds. Also reviews overall budget.
November 2	November 2	CAO prepares preliminary budget and budget message and files with the city legislative body and city clerk
November 4 and November 11	November 4 and November 11	City Clerk publishes Notice of Public Hearings on 2011 budget once a week for two consecutive weeks and publishes filing of preliminary budget
November 19	November 20	Copies of the Preliminary Budget made available to the public
November 22 <b>(Special Mtg.)</b>	November 22	City Council holds <b>public hearing</b> on revenue sources and expenditures for the upcoming budget year including possible increases in property tax revenue
November 22 <b>(Special Mtg.)</b>	November 22	Property tax <b>public hearing</b>
November 22 <b>(Special Mtg.)</b>	Before Nov 30	City Council adopts preliminary property tax levy for 2012 budget (possibly hold 2 <sup>nd</sup> in December due to delays in information from the County)
December 1 <b>(Regular Mtg.)</b>	December 1	City Council holds final <b>public hearing</b> on 2012 budget
December 1 or 15, <b>(Regular Mtgs.)</b>	December 1 or Dec 15	City Council adopts Final 2012 budget and transmits to the State Auditor's Office

Bold = Regular Council Meeting